

Recombinant Mouse Il18 protein, His-tagged

Cat. No. II18-7564M Lot. No. (See product label)

SPECIFICATION

Product Overview	Recombinant Mouse Il18 protein(P70380)(36-192aa(N36H,M85A,K87G,E90R,V91A,L94K)), fused with N-terminal His tag, was expressed in Yeast.
Species	Mouse
Source	Yeast
ProteinLength	36-192aa(N36H,M85A,K87G,E90R,V91A,L94K)
Tag	N-His
Form	If the delivery form is liquid, the default storage buffer is Tris/PBS-based buffer, 5%-50% glycerol. If the delivery form is lyophilized powder, the buffer before lyophilization is Tris/PBS-based buffer, 6% Trehalose, pH 8.0.
Molecular Mass	20.5 kDa
Purity	Greater than 85% as determined by SDS-PAGE.
Storage	Store at -20°C/-80°C upon receipt, aliquoting is necessary for mutiple use. Avoid repeated freeze-thaw cycles.
Reconstitution	We recommend that this vial be briefly centrifuged prior to opening to bring the contents to the bottom. Please reconstitute protein in deionized sterile water to a

 Tel: 1-631-559-9269 1-516-512-3133

 Email: info@creative-biomart.com  Fax: 1-631-938-8127

 45-1 Ramsey Road, Shirley, NY 11967, USA

concentration of 0.1-1.0 mg/mL. We recommend to add 5-50% of glycerol (final concentration) and aliquot for long-term storage at -20°C/-80°C.

AA Sequence HFGRLHCTTAVIRNINDQVLFVDKRQPVFEDMTDIDQSASEPQTRLIIYAYGDSRARG
KAVTLSVKDSKMSTLSCKNKIISFEEMDPPENIDDIQSDLIFFQKRVPGHNKMEFESS
LYEGHFLACQKEDDAFKLILKKKDENGDKSVMFTLTNLHQS

GENE INFORMATION

Gene Name [IL18 interleukin 18 \[Mus musculus \]](#)

Official Symbol [IL18](#)

Synonyms IL18; interleukin 18; interleukin-18; IL-1 gamma; interleukin-1 gamma; IFN-gamma-inducing factor; interferon gamma-inducing factor; interferon-gamma-inducing factor; Igif; Il-18;

Gene ID [16173](#)

mRNA Refseq [NM_008360](#)

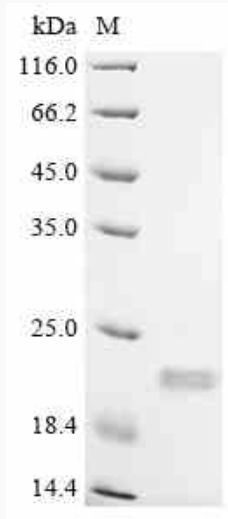
Protein Refseq [NP_032386](#)

 Tel: 1-631-559-9269 1-516-512-3133

 Email: info@creative-biomart.com  Fax: 1-631-938-8127

 45-1 Ramsey Road, Shirley, NY 11967, USA

SDS-PAGE



 Tel: 1-631-559-9269 1-516-512-3133

 Email: info@creative-biomart.com  Fax: 1-631-938-8127

 45-1 Ramsey Road, Shirley, NY 11967, USA