

Recombinant Mouse Il18r1 protein, His-tagged

Cat. No. Il18r1-1751M **Lot. No.** (See product label)

SPECIFICATION

Product Overview	Recombinant Mouse Il18r1 aa. (Cys182~Val336 (Accession # Q61098)) fused with N-terminal His tag was produced in E. coli cells.
Species	Mouse
Source	E.coli
ProteinLength	Cys182~Val336
Form	Freeze-dried powder
Molecular Mass	20kDa as determined by SDS-PAGE reducing conditions.
Endotoxin	<1.0EU per 1g (determined by the LAL method)
Purity	>95%
Characteristic	The isoelectric point is 6.5.
Applications	SDS-PAGE; WB; ELISA; IP.
Stability	The thermal stability is described by the loss rate. The loss rate was determined by accelerated thermal degradation test, that is, incubate the protein at 37°C for 48h, and no obvious degradation and precipitation were observed. The loss rate is less than 5% within the expiration date under appropriate storage condition.

 Tel: 1-631-559-9269 1-516-512-3133

 Email: info@creative-biomart.com  Fax: 1-631-938-8127

 45-1 Ramsey Road, Shirley, NY 11967, USA

Storage	Avoid repeated freeze/thaw cycles. Store at 2-8°C for one month. Aliquot and store at -80°C for 12 months.
Storage buffer	Supplied as lyophilized form in PBS, pH 7.4, containing 5% sucrose, 0.01% sarcosyl.
Reconstitution	Reconstitute in sterile PBS, pH7.2-pH7.4.

GENE INFORMATION

Gene Name	Il18r1 interleukin 18 receptor 1 [Mus musculus (house mouse)]
Official Symbol	Il18r1
Synonyms	Il18r1; interleukin 18 receptor 1; Il1rrp; Il18ralpha; interleukin-18 receptor 1; CD218 antigen-like family member A; IL-18R-1; IL-18R1; IL-1Rrp; IL1 receptor-related protein; IL1R-rp; interleukin 1 receptor related protein
Gene ID	16182
mRNA Refseq	NM_008365.2
Protein Refseq	NP_032391.1
UniProt ID	Q61098

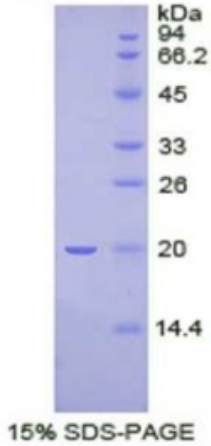
 Tel: 1-631-559-9269 1-516-512-3133

 Email: info@creative-biomart.com  Fax: 1-631-938-8127

 45-1 Ramsey Road, Shirley, NY 11967, USA

SDS-PAGE

Mouse IL18R1



 Tel: 1-631-559-9269 1-516-512-3133

 Email: info@creative-biomart.com  Fax: 1-631-938-8127

 45-1 Ramsey Road, Shirley, NY 11967, USA