

Recombinant Human II1B, HIgG1 Fc-tagged

Cat. No. II1B-466H Lot. No. (See product label)

SPECIFICATION

Product Overview	Recombinant Human II1B Protein (1-497 aa) is produced by CHO expression system. This protein is fused with a HIgG1 Fc tag.
Species	Human
Source	CHO
ProteinLength	1-497 a.a.
Form	Supplied as a 0.2 µm filtered solution in PBS (pH 7.4)
AA Sequence	<p>MAPVRSLNCTLRDSQQKSLVMSGPYELKALHLQGQDMEQQVVFMSFVQGEEESN DKIPVALGLKEKNLYLSCVLKDDKPTLQLESVDPKNYPKKKMEKRFVFNKIEINNLE FESAQFPNWIYSTSQAENMPVFLGGTKGGQDITDFTMQFVSSADDDDKPEKSSDKT HTCPCPAPPELLGGPSVFLFPPKPKDTLMISRTPEVTCVVVDVSHEDPEVKFNWYV DGVEVHNAKTKPREEQYNSTYRVVSVLTVLHQDWLNGKEYKCKVSNKALPAPIEKTI SKAKGQPREPQVYTLPPSRDELTKNQVSLTCLVKGFYPSDIAVEWESNGQPENNYK TTPPVLDSDGSFFLYSKLTVDKSRWQQGNVFCFSVMHEALHNHYTQKSLSLSPGK</p>
Endotoxin	<1EU per ug (determined by the LAL method)
Purity	>90%, by SDS-PAGE
Storage	Store it under sterile conditions at -20 centigrade to -80 centigrade. It is recommended that the protein be aliquoted for optimal storage. Avoid repeated

 Tel: 1-631-559-9269 1-516-512-3133

 Email: info@creative-biomart.com  Fax: 1-631-938-8127

 45-1 Ramsey Road, Shirley, NY 11967, USA

freeze-thaw cycles.

Concentration 6.25 mg/ml**GENE INFORMATION****Gene Name** IL1B interleukin 1, beta [Homo sapiens]**Official Symbol** IL1B**Synonyms** IL1B; IL 1B; IL1 BETA; IL1F2; IL-1 beta; catabolin; IL-1; IL1-BETA;**Gene ID** 3553**mRNA Refseq** NM_000576**Protein Refseq** NP_000567**MIM** 147720**UniProt ID** P01584 Tel: 1-631-559-9269 1-516-512-3133 Email: info@creative-biomart.com  Fax: 1-631-938-8127 45-1 Ramsey Road, Shirley, NY 11967, USA

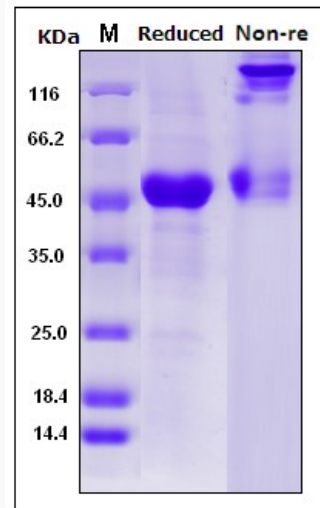


Fig 1. SDS-PAGE analysis of purified Human II1B

 Tel: 1-631-559-9269 1-516-512-3133

 Email: info@creative-biomart.com  Fax: 1-631-938-8127

 45-1 Ramsey Road, Shirley, NY 11967, USA