

Active Recombinant Mouse Il1a Protein, His tagged

Cat. No. Il1a-13M Lot. No. (See product label)

SPECIFICATION

| | |
|-------------------------|---|
| Product Overview | Recombinant mouse IL-1 alpha, fused to His-tag at C-terminus, was expressed in insect cell and purified by using conventional chromatography techniques. |
| Species | Mouse |
| Source | Insect Cells |
| ProteinLength | 115-270 aa |
| Description | Enables cytokine activity. Involved in positive regulation of angiogenesis and positive regulation of vascular endothelial growth factor production. Acts upstream of or within several processes, including connective tissue replacement involved in inflammatory response wound healing; ectopic germ cell programmed cell death; and extrinsic apoptotic signaling pathway in absence of ligand. Located in extracellular space. Is expressed in several structures, including alimentary system; brain; early conceptus; genitourinary system; and hemolymphoid system. Human ortholog(s) of this gene implicated in several diseases, including Fabry disease; Schnitzler syndrome; autoimmune disease (multiple); hematologic cancer (multiple); and lung disease (multiple). Orthologous to human IL1A (interleukin 1 alpha). |
| Form | Liquid in Phosphate-Buffered Saline (pH 7.4) containing 10% glycerol |
| Bio-activity | Measured in a cell proliferation assay using D10.G4.1 mouse helper T cells. The ED50 range ≤ 0.15 ng/mL. |

 Tel: 1-631-559-9269 1-516-512-3133

 Email: info@creative-biomart.com  Fax: 1-631-938-8127

 45-1 Ramsey Road, Shirley, NY 11967, USA

| | |
|-----------------------|--|
| Molecular Mass | 19.0 kDa (165 aa) |
| AASequence | SAPYTYQSDLRYKLMKLVLRQKFVMNDSL NQTIYQDVKHYLSTTWLNDLQQEVKFD MYAYSSGGDDSKYPVTLKISDSQLFVSAQGEDQPVLLKELPETPKLITGSETDLIFFW KSINSKNYFTSAAYPELFIATKEQSRVHLARGLP SMTDFQIS |
| Endotoxin | < 1 EU/μg by LAL |
| Purity | > 90% by SDS-PAGE |
| Applications | SDS-PAGE, Bioactivity |
| Storage | Can be stored at +2 to +8 centigrade for 1 week. For long term storage, aliquot and store at -20 to -80 centigrade. Avoid repeated freezing and thawing cycles. |
| Concentration | 0.5 mg/mL (determined by Absorbance at 280nm) |
| Reference | 1. Dinarello CA., et al. (1997) Semin Oncol. 24:S9-81-S9-93. 2. Bankers-Fulbright JL., et al. (1996) Life Sci. 59:61-83. |

GENE INFORMATION

| | |
|------------------------|---|
| Gene Name | Il1a interleukin 1 alpha [<i>Mus musculus</i> (house mouse)] |
| Official Symbol | Il1a |
| Synonyms | Il1a; interleukin 1 alpha; Il-1a; interleukin-1 alpha; IL-1 alpha |
| Gene ID | 16175 |
| mRNA Refseq | NM_010554 |

 Tel: 1-631-559-9269 1-516-512-3133

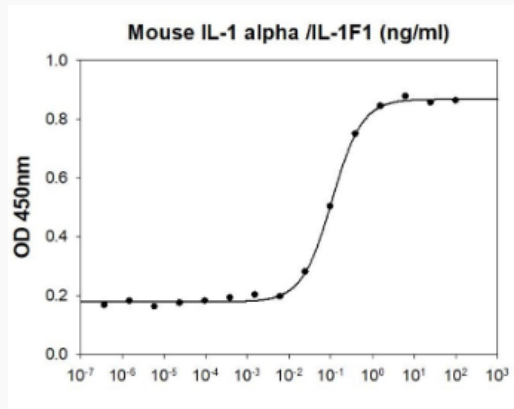
 Email: info@creative-biomart.com  Fax: 1-631-938-8127

 45-1 Ramsey Road, Shirley, NY 11967, USA

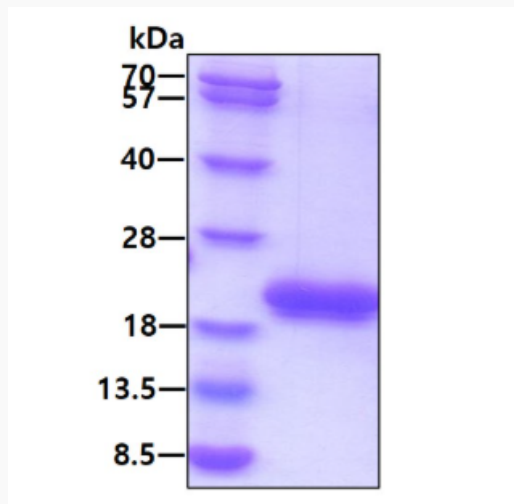
Protein Refseq NP_034684

UniProt ID P01582

Activity



SDS-PAGE



3 µg by SDS-PAGE under reducing condition and visualized by coomassie blue stain

 Tel: 1-631-559-9269 1-516-512-3133

 Email: info@creative-biomart.com  Fax: 1-631-938-8127

 45-1 Ramsey Road, Shirley, NY 11967, USA