

## Recombinant Rat Il1b Protein, His-tagged

**Cat. No.** Il1b-1019R    **Lot. No.** (See product label)

### SPECIFICATION

<b>Product Overview</b>	Recombinant Rat Il1b Protein (Val117-Ser268) with His tag was expressed in 293F.
<b>Species</b>	Rat
<b>Source</b>	HEK293
<b>ProteinLength</b>	Val117-Ser268
<b>Description</b>	Enables cytokine activity. Involved in several processes, including positive regulation of intracellular signal transduction; regulation of gene expression; and regulation of neurogenesis. Located in extracellular space. Used to study several diseases, including artery disease (multiple); brain disease (multiple); glomerulonephritis (multiple); interstitial lung disease (multiple); and kidney failure (multiple). Biomarker of several diseases, including artery disease (multiple); auditory system disease (multiple); brain disease (multiple); kidney failure (multiple); and lung disease (multiple). Human ortholog(s) of this gene implicated in several diseases, including autoimmune disease (multiple); blood platelet disease (multiple); eye disease (multiple); gastrointestinal system cancer (multiple); and lung disease (multiple). Orthologous to human IL1B (interleukin 1 beta).
<b>Form</b>	Freeze-dried powder
<b>Molecular Mass</b>	Predicted Molecular Mass: 18.2 kDa; Accurate Molecular Mass: 20 kDa
<b>Purity</b>	> 95%

 Tel: 1-631-559-9269    1-516-512-3133

 Email: [info@creative-biomart.com](mailto:info@creative-biomart.com)     Fax: 1-631-938-8127

 45-1 Ramsey Road, Shirley, NY 11967, USA

<b>Applications</b>	Cell culture; Activity Assays.
<b>Stability</b>	The thermal stability is described by the loss rate. The loss rate was determined by accelerated thermal degradation test, that is, incubate the protein at 37 centigrade for 48h, and no obvious degradation and precipitation were observed. The loss rate is less than 5% within the expiration date under appropriate storage condition.
<b>Storage</b>	Avoid repeated freeze/thaw cycles. Store at 2-8 centigrade for one month. Aliquot and store at -80 centigrade for 12 months.
<b>Storage Buffer</b>	PBS, pH7.4, containing 0.01% SKL, 1mM DTT, 5% Trehalose and Proclin300.
<b>Reconstitution</b>	Reconstitute in 10mM PBS (pH7.6) to a concentration of 0.1-1.0 mg/mL. Do not vortex.

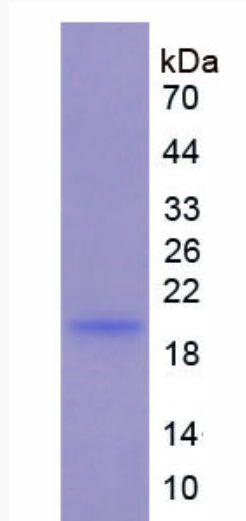
## GENE INFORMATION

<b>Gene Name</b>	Il1b interleukin 1 beta [ <a href="#">Rattus norvegicus (Norway rat)</a> ]
<b>Official Symbol</b>	<a href="#">Il1b</a>
<b>Synonyms</b>	IL1B; interleukin 1 beta; interleukin-1 beta; IL-1 beta;
<b>Gene ID</b>	<a href="#">24494</a>
<b>mRNA Refseq</b>	<a href="#">NM_031512</a>
<b>Protein Refseq</b>	<a href="#">NP_113700</a>
<b>UniProt ID</b>	<a href="#">Q63264</a>

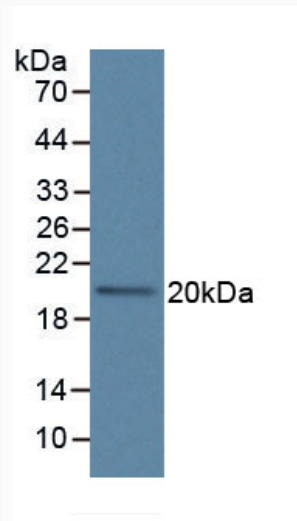
 Tel: 1-631-559-9269 1-516-512-3133

 Email: [info@creative-biomart.com](mailto:info@creative-biomart.com)  Fax: 1-631-938-8127

 45-1 Ramsey Road, Shirley, NY 11967, USA



WB

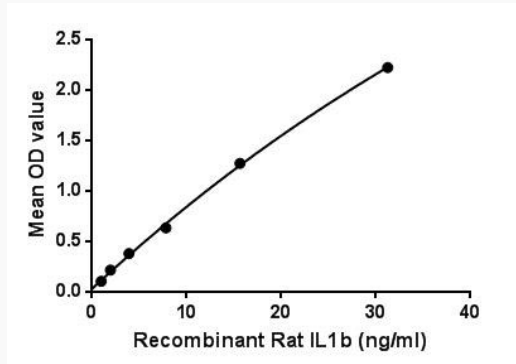


 Tel: 1-631-559-9269 1-516-512-3133

 Email: [info@creative-biomart.com](mailto:info@creative-biomart.com)  Fax: 1-631-938-8127

 45-1 Ramsey Road, Shirley, NY 11967, USA

**Binding activity**



 Tel: 1-631-559-9269 1-516-512-3133

 Email: [info@creative-biomart.com](mailto:info@creative-biomart.com)  Fax: 1-631-938-8127

 45-1 Ramsey Road, Shirley, NY 11967, USA