

Recombinant Active Mouse IL1B Protein, His-tagged(C-ter)

Cat. No. II1b-161M Lot. No. (See product label)

SPECIFICATION

Product Overview	Recombinant Active Mouse IL1B Protein with His tag (C-ter) was expressed in E. coli.
Species	Mouse
Source	E.coli
Description	<p>The protein encoded by this gene is a member of the interleukin 1 cytokine family. This cytokine is produced by activated macrophages as a proprotein, which is proteolytically processed to its active form by caspase 1 (CASP1/ICE). This cytokine is an important mediator of the inflammatory response, and is involved in a variety of cellular activities, including cell proliferation, differentiation, and apoptosis. The induction of cyclooxygenase-2 (PTGS2/COX2) by this cytokine in the central nervous system (CNS) is found to contribute to inflammatory pain hypersensitivity. This gene and eight other interleukin 1 family genes form a cytokine gene cluster on chromosome 2. [provided by RefSeq, Jul 2008]</p>
Form	Powder
Bio-activity	Determined by its ability to induce D10.G4.1 cells proliferation. The ED50 for this effect is < 8 pg/ml. The specific activity of recombinant mouse IL-1 beta is approximately > 1.2x 10 ⁸ IU/mg.
AA Sequence	<p>MVPIRQLHYRLRDEQQKSLVLSDPYELKALHLNGQNINQQVIFSMSFVQGEPNSDKI PVALGLKGNLYLSCVMKDGTPTLQLESVDPKQYPKKKMEKRFVFNKIEVKSKEFE SAEFPNWIYSTSQAEHKPVFLGNNSGQDIIDFTMESVSS</p>

 Tel: 1-631-559-9269 1-516-512-3133

 Email: info@creative-biomart.com  Fax: 1-631-938-8127

 45-1 Ramsey Road, Shirley, NY 11967, USA

Endotoxin	Endotoxin level is less than 0.1 EU/μg of the protein, as determined by the LAL test.
Purity	> 98% (by SDS-PAGE)
Applications	SDS-PAGE
Notes	For laboratory research only, not for drug, diagnostic or other use.
Storage	Lyophilized protein should be stored at -20°C. After reconstitution, aliquot and store at -20°C or -80°C for up to one month. Storage in frost free freezers is not recommended. Avoid repeated freeze/thaw cycles. Suggest spin the vial prior to opening.
Storage Buffer	PBS (pH 7.4)
Reconstitution	It is recommended to reconstitute the lyophilized protein in sterile water to a concentration not less than 100 μg/mL and incubate the stock solution for at least 20 min at room temperature to make sure the protein is dissolved completely.

GENE INFORMATION

Gene Name	Il1b interleukin 1 beta [<i>Mus musculus</i>]
Official Symbol	Il1b
Synonyms	IL1B; interleukin 1 beta; interleukin-1 beta; IL-1 beta; Il-1b; IL-1beta;
Gene ID	16176
mRNA Refseq	NM_008361

 Tel: 1-631-559-9269 1-516-512-3133

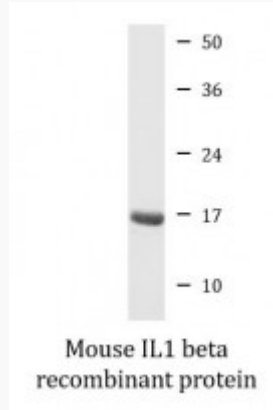
 Email: info@creative-biomart.com  Fax: 1-631-938-8127

 45-1 Ramsey Road, Shirley, NY 11967, USA

Protein Refseq

NP_032387

SDS-PAGE



 Tel: 1-631-559-9269 1-516-512-3133

 Email: info@creative-biomart.com  Fax: 1-631-938-8127

 45-1 Ramsey Road, Shirley, NY 11967, USA