

Recombinant Mouse Il1b protein, His & T7-tagged

Cat. No. Il1b-2831M Lot. No. (See product label)

SPECIFICATION

Product Overview	Recombinant Mouse Il1b aa. (Val118~Ser269 (Accession # P10749)) fused with N-terminal His & T7 tag was produced in E. coli cells.
Species	Mouse
Source	E.coli
ProteinLength	Val118~Ser269
Description	The protein encoded by this gene is a member of the interleukin 1 cytokine family. This cytokine is produced by activated macrophages as a proprotein, which is proteolytically processed to its active form by caspase 1. The encoded protein plays a role in thymocyte proliferation and is involved in the inflammatory response.
Form	Freeze-dried powder
Molecular Mass	Predicted Molecular Mass: 21.2kDa
Endotoxin	<1.0EU per 1g (determined by the LAL method)
Purity	>95%
Characteristic	The isoelectric point is 8.6.
Applications	SDS-PAGE; WB; ELISA; IP.

 Tel: 1-631-559-9269 1-516-512-3133

 Email: info@creative-biomart.com  Fax: 1-631-938-8127

 45-1 Ramsey Road, Shirley, NY 11967, USA

Stability	The thermal stability is described by the loss rate. The loss rate was determined by accelerated thermal degradation test, that is, incubate the protein at 37°C for 48h, and no obvious degradation and precipitation were observed. The loss rate is less than 5% within the expiration date under appropriate storage condition.
Storage	Avoid repeated freeze/thaw cycles. Store at 2-8°C for one month. Aliquot and store at -80°C for 12 months.
Storage buffer	Supplied as lyophilized form in PBS, pH7.4, containing 5% sucrose, 0.01% sarcosyl.
Reconstitution	Reconstitute in sterile PBS, pH7.2-pH7.4.

GENE INFORMATION

Gene Name	Il1b interleukin 1 beta [<i>Mus musculus</i> (house mouse)]
Official Symbol	Il1b
Synonyms	Il-1b; IL-1beta; IL-1 beta; interleukin-1 beta
Gene ID	16176
mRNA Refseq	NM_008361.4
Protein Refseq	NP_032387.1
UniProt ID	P10749

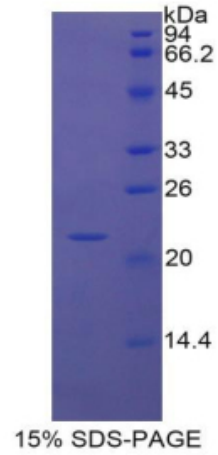
 Tel: 1-631-559-9269 1-516-512-3133

 Email: info@creative-biomart.com  Fax: 1-631-938-8127

 45-1 Ramsey Road, Shirley, NY 11967, USA



SDS-PAGE



Tel: 1-631-559-9269 1-516-512-3133

Email: info@creative-biomart.com Fax: 1-631-938-8127

45-1 Ramsey Road, Shirley, NY 11967, USA