

Active Recombinant Mouse Il1b protein

Cat. No. Il1b-462M Lot. No. (See product label)

SPECIFICATION

Product Overview	Active Recombinant Mouse Il1b protein(P10749)(118-269 aa) was expressed in E. coli.
Species	Mouse
Source	E. coli
ProteinLength	118-269 aa
Form	Lyophilized from a 0.2 µ filtered solution in PBS, pH 7.4, with 5 % trehalose, 0.02 % Tween-20.
Bio-activity	Fully biologically active when compared to standard. The ED50 as determined by a cell proliferation assay using murine D10S cells is less than 2 pg/ml, corresponding to a specific activity of > 5.0 × 10 ⁸ IU/mg.
Molecular Mass	Approximately 17.5 kDa, a single non-glycosylated polypeptide chain containing 152 amino acids.
AASequence	VPIRQLHYRL RDEQKSLVL SDPYELKALH LNGQNINQQV IFSMSFVQGE PSNDKIPVAL GLKGNLYLS CVMKDGTPTL QLESVDPKQY PKKKMEKRFV FNKIEVKSKV EFESAEPNW YISTSQAEHK PVFLGNNSGQ DIIDFTMESV SS
Endotoxin	Less than 1 EU/g of rMuL-1β as determined by LAL method.

 Tel: 1-631-559-9269 1-516-512-3133

 Email: info@creative-biomart.com  Fax: 1-631-938-8127

 45-1 Ramsey Road, Shirley, NY 11967, USA

Purity	> 96 % by SDS-PAGE and HPLC analyses.
Storage	Use a manual defrost freezer and avoid repeated freeze-thaw cycles. - 12 months from date of receipt, -20 to -70 °C as supplied. - 1 month, 2 to 8 °C under sterile conditions after reconstitution. - 3 months, -20 to -70 °C under sterile conditions after reconstitution.
Reconstitution	We recommend that this vial be briefly centrifuged prior to opening to bring the contents to the bottom. Reconstitute in sterile distilled water or aqueous buffer containing 0.1 % BSA to a concentration of 0.1-1.0 mg/mL. Stock solutions should be apportioned into working aliquots and stored at ≤ -20 °C. Further dilutions should be made in appropriate buffered solutions.

GENE INFORMATION

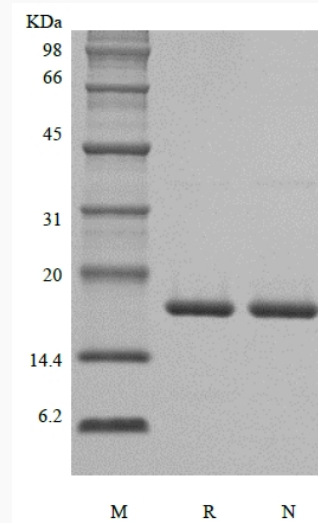
Gene Name	Il1b interleukin 1 beta [<i>Mus musculus</i>]
Official Symbol	Il1b
Synonyms	IL1B; interleukin 1 beta; interleukin-1 beta; IL-1 beta; Il-1b; IL-1beta;
Gene ID	16176
mRNA Refseq	NM_008361
Protein Refseq	NP_032387

 Tel: 1-631-559-9269 1-516-512-3133

 Email: info@creative-biomart.com  Fax: 1-631-938-8127

 45-1 Ramsey Road, Shirley, NY 11967, USA

SDS-PAGE



 Tel: 1-631-559-9269 1-516-512-3133

 Email: info@creative-biomart.com  Fax: 1-631-938-8127

 45-1 Ramsey Road, Shirley, NY 11967, USA