

## Active Recombinant Rat II1b protein

Cat. No. II1b-463R Lot. No. (See product label)

### SPECIFICATION

<b>Product Overview</b>	Active Recombinant Rat II1b protein(Q63264)(117-268 aa) was expressed in E. coli.
<b>Species</b>	Rat
<b>Source</b>	E. coli
<b>ProteinLength</b>	117-268 aa
<b>Form</b>	Lyophilized from a 0.2 µ filtered concentrated solution in PBS, pH 7.4, with 5 % trehalose, 0.02 % Tween-20.
<b>Bio-activity</b>	Fully biologically active when compared to standard. The ED50 as determined by a cell proliferation assay using murine D10S cells is less than 0.1 ng/ml, corresponding to a specific activity of > 1.0 × 10 <sup>7</sup> IU/mg.
<b>Molecular Mass</b>	Approximately 17.3 kDa, a single non-glycosylated polypeptide chain containing 153 amino acids.
<b>AASequence</b>	MVPIRQLHCR LRDEQQKCLV LSDPCELKAL HLNQGNISQQ VVFSMSFVQG ETSNDKIPVA LGLKGLNLYL SCVMKDGTPPT LQLESVDPKQ YPKKKMEKRF VFNKIEVKTK VEFESAQFPN WYISTSQAEH RPVFLGNSNG RDIVDFTMEP VSS
<b>Endotoxin</b>	Less than 1 EU/g of rRtIL-1β as determined by LAL method.
<b>Purity</b>	> 96 % by SDS-PAGE and HPLC analyses.

 Tel: 1-631-559-9269 1-516-512-3133

 Email: [info@creative-biomart.com](mailto:info@creative-biomart.com)  Fax: 1-631-938-8127

 45-1 Ramsey Road, Shirley, NY 11967, USA

**Storage**

Use a manual defrost freezer and avoid repeated freeze-thaw cycles. - 12 months from date of receipt, -20 to -70 °C as supplied. - 1 month, 2 to 8 °C under sterile conditions after reconstitution. - 3 months, -20 to -70 °C under sterile conditions after reconstitution.

**Reconstitution**

We recommend that this vial be briefly centrifuged prior to opening to bring the contents to the bottom. Reconstitute in sterile distilled water or aqueous buffer containing 0.1 % BSA to a concentration of 0.1-1.0 mg/mL. Stock solutions should be apportioned into working aliquots and stored at ≤ -20 °C. Further dilutions should be made in appropriate buffered solutions.

**GENE INFORMATION**

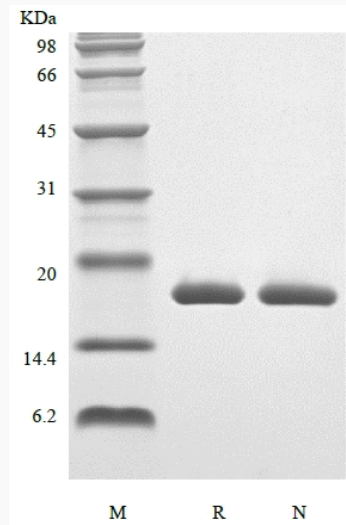
<b>Gene Name</b>	Il1b interleukin 1 beta [ <a href="#">Rattus norvegicus</a> ]
<b>Official Symbol</b>	<a href="#">Il1b</a>
<b>Synonyms</b>	IL1B; interleukin 1 beta; interleukin-1 beta; IL-1 beta;
<b>Gene ID</b>	<a href="#">24494</a>
<b>mRNA Refseq</b>	<a href="#">NM_031512</a>
<b>Protein Refseq</b>	<a href="#">NP_113700</a>

 Tel: 1-631-559-9269 1-516-512-3133

 Email: [info@creative-biomart.com](mailto:info@creative-biomart.com)  Fax: 1-631-938-8127

 45-1 Ramsey Road, Shirley, NY 11967, USA

**SDS-PAGE**



 Tel: 1-631-559-9269 1-516-512-3133

 Email: [info@creative-biomart.com](mailto:info@creative-biomart.com)  Fax: 1-631-938-8127

 45-1 Ramsey Road, Shirley, NY 11967, USA