

Recombinant Mouse Il1b protein, His-tagged

Cat. No. II1b-509M Lot. No. (See product label)

SPECIFICATION

Product Overview	Recombinant Mouse Il1b (P10749) aa. (Val118~Ser269) fused with His tag was produced in HEK293F cells.
Species	Mouse
Source	HEK293
ProteinLength	Val118~Ser269
Description	The protein encoded by this gene is a member of the interleukin 1 cytokine family. This cytokine is produced by activated macrophages as a proprotein, which is proteolytically processed to its active form by caspase 1. The encoded protein plays a role in thymocyte proliferation and is involved in the inflammatory response.
Form	Freeze-dried powder
Molecular Mass	Predicted Molecular Mass: 19kDa; Accurate Molecular Mass: 19kDa as determined by SDS-PAGE reducing conditions.
Endotoxin	<1.0EU per 1ug (determined by the LAL method)
Purity	> 97%
Characteristic	Isoelectric point is 8.

 Tel: 1-631-559-9269 1-516-512-3133

 Email: info@creative-biomart.com  Fax: 1-631-938-8127

 45-1 Ramsey Road, Shirley, NY 11967, USA

Applications	SDS-PAGE; WB; ELISA; IP; CoIP; EMSA; Reporter Assays; Purification; Amine Reactive Labeling
Stability	The thermal stability is described by the loss rate. The loss rate was determined by accelerated thermal degradation test, that is, incubate the protein at 37°C for 48h, and no obvious degradation and precipitation were observed. The loss rate is less than 5% within the expiration date under appropriate storage condition.
Storage	Avoid repeated freeze/thaw cycles. Store at 2-8°C for one month. Aliquot and store at -80°C for 12 months.
Concentration	200ug/mL
Storage buffer	20mM Tris, 150mM NaCl, pH8.0, containing 1mM EDTA, 1mM DTT, 5% Trehalose and Proclin300.
Reconstitution	Reconstitute in 20mM Tris, 150mM NaCl (pH8.0) to a concentration of 0.1-1.0 mg/mL. Do not vortex

GENE INFORMATION

Gene Name	Il1b interleukin 1 beta [Mus musculus (house mouse)]
Official Symbol	Il1b
Synonyms	Il1b; interleukin 1 beta; Il-1b; IL-1beta; interleukin-1 beta
Gene ID	16176
mRNA Refseq	NM_008361.4

 Tel: 1-631-559-9269 1-516-512-3133

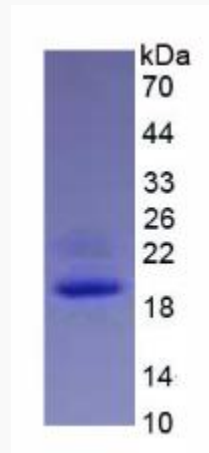
 Email: info@creative-biomart.com  Fax: 1-631-938-8127

 45-1 Ramsey Road, Shirley, NY 11967, USA

Protein Refseq NP_032387.1

UniProt ID P10749

SDS-PAGE



 Tel: 1-631-559-9269 1-516-512-3133

 Email: info@creative-biomart.com  Fax: 1-631-938-8127

 45-1 Ramsey Road, Shirley, NY 11967, USA