

## Active Recombinant Mouse Il1b Protein (Val118-Ser269), C-His tagged, Animal-free, Carrier-free

Cat. No. Il1b-55M Lot. No. (See product label)

### SPECIFICATION

<b>Product Overview</b>	Recombinant Mouse Il1b Protein (Val118-Ser269) with C-His tag was expressed in E. coli and Animal-free as well as Carrier-free.
<b>Species</b>	Mouse
<b>Source</b>	E.coli
<b>ProteinLength</b>	Val118-Ser269
<b>Description</b>	Interleukin-1 beta (IL-1 $\beta$ ) is a major cytokine expressed in macrophage, NK cells, monocytes, and neutrophils. It also plays fundamental role in inflammatory response, including monocyte activation, which is essential for the host defense and pathogen resistance. Pro-IL-1 $\beta$ is cleaved by cytosolic caspase 1 to form mature IL-1 $\beta$ .
<b>Form</b>	Lyophilized
<b>Bio-activity</b>	Measure by its ability to induce D10.G4.1 cells proliferation. The ED50 for this effect is < 8 pg/mL. The specific activity of recombinant mouse IL-1 beta is approximately >1.2 $\times$ 10 <sup>8</sup> IU/mg.
<b>Molecular Mass</b>	The protein has a calculated MW of 18.3 kDa. The protein migrates as 17 kDa under reducing condition (SDS-PAGE analysis).
<b>Endotoxin</b>	< 0.1 EU/ $\mu$ g of the protein by the LAL method.

 Tel: 1-631-559-9269 1-516-512-3133

 Email: [info@creative-biomart.com](mailto:info@creative-biomart.com)  Fax: 1-631-938-8127

 45-1 Ramsey Road, Shirley, NY 11967, USA

<b>Purity</b>	>98% as determined by SDS-PAGE analysis.
<b>Storage</b>	This product is stable after storage at: -20 centigrade for 12 months in lyophilized state from date of receipt. -20 or -80 centigrade for 1 month under sterile conditions after reconstitution. Avoid repeated freeze/thaw cycles.
<b>Storage Buffer</b>	Lyophilized from a 0.2 µm filtered solution of PBS, pH 7.4.
<b>Reconstitution</b>	It is recommended to reconstitute the lyophilized protein in sterile H <sub>2</sub> O to a concentration not less than 200 µg/mL and incubate the stock solution for at least 20 min to ensure sufficient re-dissolved.
<b>Shipping</b>	The product is shipped with polar packs. Upon receipt, store it immediately at -20 centigrade or lower for long term storage.

## GENE INFORMATION

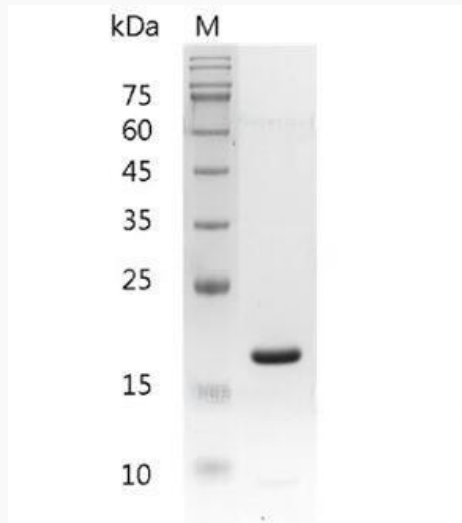
<b>Gene Name</b>	Il1b interleukin 1 beta [ <i>Mus musculus</i> (house mouse) ]
<b>Official Symbol</b>	Il1b
<b>Synonyms</b>	IL1B; interleukin 1 beta; interleukin-1 beta; IL-1 beta; Il-1b; IL-1beta;
<b>Gene ID</b>	16176
<b>mRNA Refseq</b>	NM_008361
<b>Protein Refseq</b>	NP_032387
<b>UniProt ID</b>	P10749

 Tel: 1-631-559-9269 1-516-512-3133

 Email: [info@creative-biomart.com](mailto:info@creative-biomart.com)  Fax: 1-631-938-8127

 45-1 Ramsey Road, Shirley, NY 11967, USA

**SDS-PAGE analysis  
of recombinant  
mouse IL-1 beta**



 Tel: 1-631-559-9269 1-516-512-3133

 Email: [info@creative-biomart.com](mailto:info@creative-biomart.com)  Fax: 1-631-938-8127

 45-1 Ramsey Road, Shirley, NY 11967, USA