

## Recombinant Mouse Il1b Protein, His-tagged

Cat. No. Il1b-7238M Lot. No. (See product label)

### SPECIFICATION

|                         |  |
|-------------------------|--|
| <b>Product Overview</b> | Recombinant mouse IL-1beta, fused to His tag, was expressed in E. coli and purified by using conventional chromatography techniques.   |
| <b>Species</b>          | Mouse  |
| <b>Source</b>           | E.coli   |
| <b>ProteinLength</b>    | 118-269  |
| <b>Description</b>      | The protein encoded by this gene is a member of the interleukin 1 cytokine family. This cytokine is produced by activated macrophages as a proprotein, which is proteolytically processed to its active form by caspase 1. The encoded protein plays a role in thymocyte proliferation and is involved in the inflammatory response. |
| <b>Form</b>             | Liquid   |
| <b>Molecular Mass</b>   | 21 kDa   |
| <b>AA Sequence</b>      | MRGSHHHHHHGMASMTGGQQMGRDLYDDDDKDRWGSMVPIRQLHYRLRDEQQK<br>SLVLSDPYELKALHLNGQNINQQVIFSMSFVQGEPNSNDKIPVALGLKGKNLYLSCVM<br>KDGTPTLQLESVDPKQYPKKKMEKRFVFNKIEVKSKVEFESAEPFNWYISTSQAEHK<br>PVFLGNNSGQDIIDFTMESVSS   |
| <b>Purity</b>           | > 90 % by SDS-PAGE   |

 Tel: 1-631-559-9269 1-516-512-3133

 Email: [info@creative-biomart.com](mailto:info@creative-biomart.com)  Fax: 1-631-938-8127

 45-1 Ramsey Road, Shirley, NY 11967, USA

|                       |   |
|-----------------------|---|
| <b>Stability</b>      | Shelf life: one year from despatch.   |
| <b>Storage</b>        | Store undiluted at 2-8 centigrade for one week or (in aliquots) at -20 to -80 centigrade for longer. Avoid repeated freezing and thawing. |
| <b>Concentration</b>  | 1.0 mg/mL (determined by Bradford assay)  |
| <b>Storage Buffer</b> | 20 mM Tris pH 8.0, 10 % glycerol  |

## GENE INFORMATION

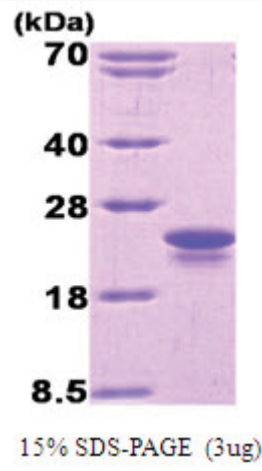
|                        |   |
|------------------------|---|
| <b>Gene Name</b>       | Il1b interleukin 1 beta [ <i>Mus musculus</i> (house mouse) ]                 |
| <b>Official Symbol</b> | Il1b  |
| <b>Synonyms</b>        | Il1b; interleukin 1 beta; IL-; Il-1b; IL-1beta; interleukin-1 beta; IL-1 beta |
| <b>Gene ID</b>         | 16176   |
| <b>mRNA Refseq</b>     | NM_008361   |
| <b>Protein Refseq</b>  | NP_032387   |
| <b>UniProt ID</b>      | P10749  |

 Tel: 1-631-559-9269 1-516-512-3133

 Email: [info@creative-biomart.com](mailto:info@creative-biomart.com)  Fax: 1-631-938-8127

 45-1 Ramsey Road, Shirley, NY 11967, USA

SDS-PAGE



 Tel: 1-631-559-9269 1-516-512-3133

 Email: [info@creative-biomart.com](mailto:info@creative-biomart.com)  Fax: 1-631-938-8127

 45-1 Ramsey Road, Shirley, NY 11967, USA