

Recombinant Mouse Il1f6 protein

Cat. No. Il1f6-550M **Lot. No.** (See product label)

SPECIFICATION

Product Overview	Recombinant Mouse Il1f6 protein (160 a.a.) was expressed in Escherichia coli.
Species	Mouse
Source	E.coli
ProteinLength	160
Description	<p>Interleukin-36 (IL-36) is a pro-inflammatory cytokine which plays an important role in the pathophysiology of several diseases. IL-36α, IL-36β, and IL-36γ (formerly IL-1F6, IL-1F8, and IL-1F9) are IL-1 family members that signal through the IL-1 receptor family members IL-1Rrp2 (IL-1RL2) and IL-1RAcP. IL-36α is mainly found in skin and lymphoid tissues, but also in fetal brain, trachea, stomach and intestine. It is expressed by monocytes, B and T cells. Notably, IL-36 alpha is the only novel IL-1 family member expressed on T-cells. Recombinant murine interleukin-36 alpha contains 160 amino acids residues which is a single non-glycosylated polypeptide. Specifically, mouse IL-36α shares 83 % a.a. sequence identity with rat IL-36α, 54-60 % with human, rabbit, equine and bovine IL-36α.</p>
Form	Lyophilized from a 0.2 μ m filtered concentrated solution in PBS, pH 7.4, 5 % trehalose.
Bio-activity	Fully biologically active when compared to standard. The specific activity determined by its ability in a functional ELISA. Immobilized rMuIL-36 α at 1 g/mL can bind

 Tel: 1-631-559-9269 1-516-512-3133

 Email: info@creative-biomart.com  Fax: 1-631-938-8127

 45-1 Ramsey Road, Shirley, NY 11967, USA

	recombinant murine IL-1 Rrp2 with a range of 0.15-5 g/mL.
Molecular Mass	Approximately 18.0 kDa, a single non-glycosylated polypeptide chain containing 160 amino acids.
AA Sequence	MNKEKELRAASPSLRHVQDLSSRVWILQNNILTAVPRKEQTPVTITLLPCQYLDLTLE TNRGDPTYMGVQRPMSCFLCTKDGEQPVLQLGEGNIMEMYNKKEPKASLFYHKK SGTTSTFESAAFPGWFIACVCSKGCPLILTQELGEIFITDFEMIVVH
Endotoxin	Less than 1 EU/μg of rMuIL-36α, 160a.a. as determined by LAL method.
Purity	>95% by SDS-PAGE and HPLC analysis.
Storage	Use a manual defrost freezer and avoid repeated freeze-thaw cycles. 12 months from date of receipt, -20 to -70 centigrade as supplied. 1 month, 2 to 8 centigrade under sterile conditions after reconstitution. 3 months, -20 to -70 centigrade under sterile conditions after reconstitution.
Reconstitution	We recommend that this vial be briefly centrifuged prior to opening to bring the contents to the bottom. Reconstitute in sterile distilled water or aqueous buffer containing 0.1 % BSA to a concentration of 0.1-1.0 mg/mL. Stock solutions should be apportioned into working aliquots and stored at ≤-20 centigrade. Further dilutions should be made in appropriate buffered solutions.

GENE INFORMATION

Gene Name	Il1f6
Official Symbol	Il1f6
Synonyms	FIL1 epsilon, IL-1 epsilon, IL-1F6, IL-1H1

 Tel: 1-631-559-9269 1-516-512-3133

 Email: info@creative-biomart.com  Fax: 1-631-938-8127

 45-1 Ramsey Road, Shirley, NY 11967, USA

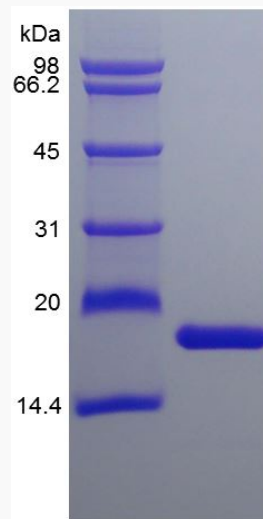
Gene ID 54448

mRNA Refseq NM_019450

Protein Refseq NP_062323

UniProt ID Q9JLA2

SDS-PAGE of II1f6-550M



 Tel: 1-631-559-9269 1-516-512-3133

 Email: info@creative-biomart.com  Fax: 1-631-938-8127

 45-1 Ramsey Road, Shirley, NY 11967, USA