

Recombinant Mouse Il1f8 protein

Cat. No. Il1f8-646M Lot. No. (See product label)

SPECIFICATION

Product Overview	Recombinant Mouse Il1f8 protein (Ser31-Lys183) was expressed in Escherichia coli.
Species	Mouse
Source	E.coli
ProteinLength	153
Description	<p>Interleukin-36 is a pro-inflammatory cytokine which plays an important role in the pathophysiology of several diseases. IL-36α, IL-36β, and IL-36γ (formerly IL-1F6, IL-1F8, and IL-1F9) are IL-1 family members that signal through the IL-1 receptor family members IL-1Rrp2 (IL-1RL2) and IL-1RAcP. IL-36 beta is reported to be expressed at higher levels in psoriatic plaques than in symptomless psoriatic skin or healthy control skin and it can stimulate production of interleukin-6 and interleukin-8 in synovial fibroblasts, articular chondrocytes and mature adipocytes. IL-36 beta has two isoforms. IL-36β2 contains one potential N-linked glycosylation site in its C-terminus, while IL-36β isoform 1 lacks potential N-linked glycosylation sites and four of the conserved β-strands. Within the IL-1 family, IL-36β/IL-1F8 shares 30 %, 32 %, 37 %, 46 %, 34 %, 45 % and 28 % a.a. sequence identity with IL-1 ra, IL-1β, IL-36Ra/IL-1F5, IL-36α/IL-1F6, IL-37/IL-1F7, IL-36γ/IL-1F9 and IL-1F10, respectively.</p>
Form	Lyophilized from a 0.2 μ m filtered concentrated solution in PBS, pH 7.4, 5% trehalose.
Bio-activity	Fully biologically active when compared to standard. The ED50 as determined by

 Tel: 1-631-559-9269 1-516-512-3133

 Email: info@creative-biomart.com  Fax: 1-631-938-8127

 45-1 Ramsey Road, Shirley, NY 11967, USA

inducing IL-6 secretion in murine NIH/3T3 cells is less than 10 ng/ml, corresponding to a specific activity of $> 1.0 \times 10^5$ IU/mg.

Molecular Mass

Approximately 17.4 kDa, a single non-glycosylated polypeptide chain containing 153 amino acids.

AA Sequence

SSQSPRNYRVHDSQQMVVLTGNTLTAVPASNNVKPVILSLIACRDTEFQDVKKG
LVFLGIKRNRLCFCCVEMEGKPTLQLKEVDIMNLYKERKAQKAFLFYHGIEGSTSVFQ
SVLYPGWFIATSSIERQTIILTHQRGKLVNTNFYIESEK

Endotoxin

Less than 1 EU/g of rMuIL-36 β , 153a.a. as determined by LAL method.

Purity

>97% by SDS-PAGE and HPLC analysis.

Storage

Use a manual defrost freezer and avoid repeated freeze-thaw cycles. 12 months from date of receipt, -20 to -70 centigrade as supplied. 1 month, 2 to 8 centigrade under sterile conditions after reconstitution. 3 months, -20 to -70 centigrade under sterile conditions after reconstitution.

Reconstitution

We recommend that this vial be briefly centrifuged prior to opening to bring the contents to the bottom. Reconstitute in sterile distilled water or aqueous buffer containing 0.1 % BSA to a concentration of 0.1-1.0 mg/mL. Stock solutions should be apportioned into working aliquots and stored at ≤ -20 centigrade. Further dilutions should be made in appropriate buffered solutions.

GENE INFORMATION

Gene Name

Il1f8

Official Symbol

Il1f8

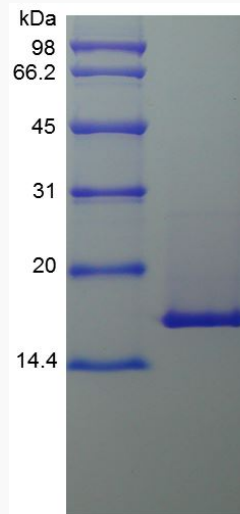
 Tel: 1-631-559-9269 1-516-512-3133

 Email: info@creative-biomart.com  Fax: 1-631-938-8127

 45-1 Ramsey Road, Shirley, NY 11967, USA

Synonyms	IL1F8; interleukin 1 family, member 8; interleukin-36 beta; IL-1F8; interleukin-1 family member 8; IL36b; 2310043N20Rik;
Gene ID	69677
mRNA Refseq	NM_027163
Protein Refseq	NP_081439
UniProt ID	Q9D6Z6

SDS-PAGE of Il1f8-646M



 Tel: 1-631-559-9269 1-516-512-3133

 Email: info@creative-biomart.com  Fax: 1-631-938-8127

 45-1 Ramsey Road, Shirley, NY 11967, USA