

Recombinant Mouse Il1f8 protein

Cat. No. Il1f8-647M **Lot. No.** (See product label)

SPECIFICATION

Product Overview Recombinant Mouse Il1f8 protein (Met1-Lys183) was expressed in Escherichia coli.

Species Mouse

Source E.coli

ProteinLength 183

Description

Interleukin-36 (IL-36) is a pro-inflammatory cytokine which plays an important role in the pathophysiology of several diseases. IL-36 α , IL-36 β , and IL-36 γ (formerly IL-1F6, IL-1F8, and IL-1F9) are IL-1 family members that signal through the IL-1 receptor family members IL-1Rrp2 (IL-1RL2) and IL-1RAcP. IL-36 beta is reported to be expressed at higher levels in psoriatic plaques than in symptomless psoriatic skin or healthy control skin and it can stimulate production of interleukin-6 and interleukin-8 in synovial fibroblasts, articular chondrocytes and mature adipocytes. It beta has two isoforms. IL-36 β isoform 2 contains one potential N-linked glycosylation site in its C-terminus, while IL -36 β isoform 1 lacks potential N-linked glycosylation sites and four of the conserved β -strands. Within the IL-1 family, IL-36 β /IL-1F8 shares 30 %, 32 %, 37 %, 46 %, 34 %, 45 % and 28 % a.a. sequence identity with IL-1 ra, IL-1 β , IL-36Ra/IL-1F5, IL-36 α /IL-1F6, IL-37/IL-1F7, IL-36 γ /IL-1F9 and IL-1F10, respectively.

Form

Lyophilized from a 0.2 μ m filtered concentrated solution in 20 mM Tris, 300 mM NaCl, pH 8.0, 5 % trehalose.

 Tel: 1-631-559-9269 1-516-512-3133

 Email: info@creative-biomart.com  Fax: 1-631-938-8127

 45-1 Ramsey Road, Shirley, NY 11967, USA

Bio-activity	Fully biologically active when compared to standard. The specific activity determined by its ability in a functional ELISA. Immobilized rMUL-36 β at 1 g/mL can bind recombinant murine IL-1 Rrp2 with a range of 0.15-5 g/mL.
Molecular Mass	Approximately 20.9 kDa, a single non-glycosylated polypeptide chain containing 183 amino acids.
AA Sequence	MMAFPPQSCVHVLPPKSIQMWEPNHNTMHGSSQSPRNYRVHDSQQMVWVLTGNT LTAVPASNNVKPVILSLIACRDTEFQDVKKGNLVFLGIKRNRLCFCCVEMEGKPTLQL KEVDIMNLYKERKAQKAFLFYHGIEGSTSVFQSVLYPGWFIATSSIERQTIILTHQRGK LVNTNFYIESEK
Endotoxin	Less than 1 EU/ μ g of rMUL-36 β , 183a.a. as determined by LAL method.
Purity	>95% by SDS-PAGE and HPLC analysis.
Storage	Use a manual defrost freezer and avoid repeated freeze-thaw cycles. 12 months from date of receipt, -20 to -70 centigrade as supplied. 1 month, 2 to 8 centigrade under sterile conditions after reconstitution. 3 months, -20 to -70 centigrade under sterile conditions after reconstitution.
Reconstitution	We recommend that this vial be briefly centrifuged prior to opening to bring the contents to the bottom. Reconstitute in sterile distilled water or aqueous buffer containing 0.1 % BSA to a concentration of 0.1-1.0 mg/mL. Stock solutions should be apportioned into working aliquots and stored at \leq -20 centigrade. Further dilutions should be made in appropriate buffered solutions.

GENE INFORMATION

Gene Name II1f8

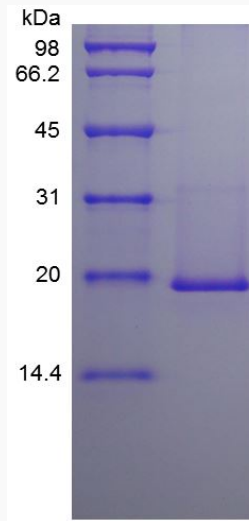
 Tel: 1-631-559-9269 1-516-512-3133

 Email: info@creative-biomart.com  Fax: 1-631-938-8127

 45-1 Ramsey Road, Shirley, NY 11967, USA

Official Symbol	II1f8
Synonyms	IL1F8; interleukin 1 family, member 8; interleukin-36 beta; IL-1F8; interleukin-1 family member 8; IL36b; 2310043N20Rik;
Gene ID	69677
mRNA Refseq	NM_027163
Protein Refseq	NP_081439
UniProt ID	Q9D6Z6

SDS-PAGE of II1f8-647M



 Tel: 1-631-559-9269 1-516-512-3133

 Email: info@creative-biomart.com  Fax: 1-631-938-8127

 45-1 Ramsey Road, Shirley, NY 11967, USA