

## Recombinant Mouse Il1r2 Protein (Phe14-Glu355), C-His tagged

**Cat. No.** Il1r2-5703M    **Lot. No.** (See product label)

### SPECIFICATION

<b>Product Overview</b>	Recombinant mouse Il1r2 (Phe14-Glu355) fused with the C-terminal His tag was expressed in mammalian cells.
<b>Species</b>	Mouse
<b>Source</b>	Mammalian Cells
<b>ProteinLength</b>	Phe14-Glu355
<b>Form</b>	Lyophilized powder/frozen liquid
<b>Molecular Mass</b>	37.62 kDa
<b>Purity</b>	> 90 % as determined by SDS-PAGE
<b>Notes</b>	For research use only.
<b>Storage</b>	Use a manual defrost freezer and avoid repeated freeze thaw cycles. Store at 2 to 8 centigrade for one week. Store at -20 to -80 centigrade for twelve months from the date of receipt.
<b>Storage Buffer</b>	Supplied as solution form in PBS or lyophilized from PBS.
<b>Reconstitution</b>	Reconstitute in sterile water for a stock solution.

 Tel: 1-631-559-9269    1-516-512-3133

 Email: [info@creative-biomart.com](mailto:info@creative-biomart.com)     Fax: 1-631-938-8127

 45-1 Ramsey Road, Shirley, NY 11967, USA

**Shipping**

They are shipped out with dry ice/blue ice unless customers require otherwise.

**GENE INFORMATION****Gene Name**Il1r2 interleukin 1 receptor, type II [ *Mus musculus* (house mouse) ]**Official Symbol**

Il1r2

**Synonyms**

IL1R2; interleukin 1 receptor, type II; interleukin-1 receptor type 2; IL-1R-2; IL-1RT2; IL-1RT-2; IL-1R-beta; IL-1 type II receptor; IL-1 receptor beta chain; interleukin-1 receptor beta; interleukin-1 receptor type II; CD121 antigen-like family member B; CD121b; Il1r-2;

**Gene ID**

16178

**mRNA Refseq**

NM\_010555

**Protein Refseq**

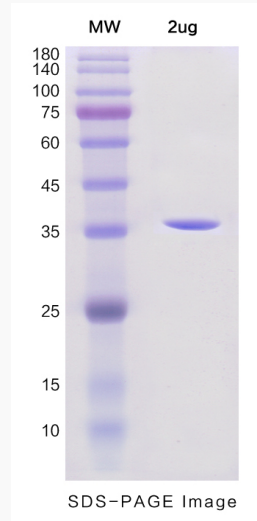
NP\_034685

**UniProt ID**

P27931

 Tel: 1-631-559-9269 1-516-512-3133 Email: [info@creative-biomart.com](mailto:info@creative-biomart.com)  Fax: 1-631-938-8127 45-1 Ramsey Road, Shirley, NY 11967, USA

**SDS-PAGE**



 Tel: 1-631-559-9269 1-516-512-3133

 Email: [info@creative-biomart.com](mailto:info@creative-biomart.com)  Fax: 1-631-938-8127

 45-1 Ramsey Road, Shirley, NY 11967, USA