

Recombinant Mouse Il1rap protein, His & T7-tagged

Cat. No. Il1rap-1576M **Lot. No.** (See product label)

SPECIFICATION

Product Overview	Recombinant Mouse Il1rap aa. (Ser21~Thr367 (Accession # Q61730)) fused with N-terminal His & T7 tag was produced in E. coli cells.
Species	Mouse
Source	E.coli
ProteinLength	Ser21~Thr367
Form	Freeze-dried powder
Molecular Mass	Predicted Molecular Mass: 43.7kDa
Endotoxin	<1.0EU per 1ug (determined by the LAL method)
Purity	>90%
Applications	SDS-PAGE; WB; ELISA; IP.
Stability	The thermal stability is described by the loss rate. The loss rate was determined by accelerated thermal degradation test, that is, incubate the protein at 37°C for 48h, and no obvious degradation and precipitation were observed. The loss rate is less than 5% within the expiration date under appropriate storage condition.
Storage	Avoid repeated freeze/thaw cycles. Store at 2-8°C for one month. Aliquot and store at

 Tel: 1-631-559-9269 1-516-512-3133

 Email: info@creative-biomart.com  Fax: 1-631-938-8127

 45-1 Ramsey Road, Shirley, NY 11967, USA

-80°C for 12 months.

Storage buffer

Supplied as lyophilized form in 20mM Tris, 150mM NaCl, pH8.0, containing 1mM EDTA, 1mM DTT, 0.01% sarcosyl, 5% trehalose, and preservative.

Reconstitution

Reconstitute in sterile ddH₂O.

Isoelectric Point

6

GENE INFORMATION

Gene Name

Il1rap interleukin 1 receptor accessory protein [*Mus musculus* (house mouse)]

Official Symbol

Il1rap

Synonyms

Il1rap; interleukin 1 receptor accessory protein; AI255955; AV239853; IL-1RAcP; 6430709H04Rik; interleukin-1 receptor accessory protein; IL-1 receptor accessory protein; interleukin-33 receptot beta chain

Gene ID

16180

mRNA Refseq

NM_001159318.1

Protein Refseq

NP_001152790.1

UniProt ID

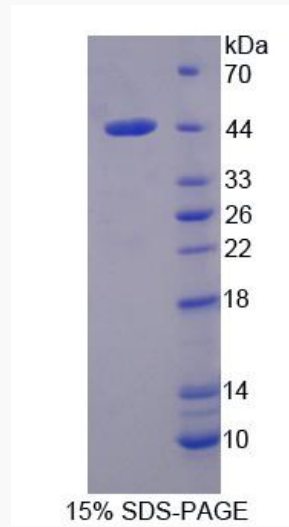
Q61730

 Tel: 1-631-559-9269 1-516-512-3133

 Email: info@creative-biomart.com  Fax: 1-631-938-8127

 45-1 Ramsey Road, Shirley, NY 11967, USA

SDS-PAGE



 Tel: 1-631-559-9269 1-516-512-3133

 Email: info@creative-biomart.com  Fax: 1-631-938-8127

 45-1 Ramsey Road, Shirley, NY 11967, USA