

Active Recombinant Mouse Il20 Protein, His-Tagged

Cat. No. Il20-01M Lot. No. (See product label)

SPECIFICATION

Product Overview	Recombinant mouse Il20 Protein, His-tagged was expressed in E. coli cell
Species	Mouse
Source	E.coli
Description	Interleukin 20 (IL20) is a cytokine structurally related to interleukin 10 (IL-10). This cytokine has been shown to transduce its signal through signal transducer and activator of transcription 3 (STAT3) in keratinocytes. A specific receptor for this cytokine is found to be expressed in skin and upregulated dramatically in psoriatic skin, suggesting a role for this protein in epidermal function and psoriasis.
Form	Lyophilized powder
AA Sequence	MLKTLHLGSCVITANLQAIQKEFSEIRDSVQAEDTNIDIRILRTTESLKDIKSLDRCCFL RHLVRFYLDRVFKVYQTPDHHTLRKISSLANSLIIKK DLSVCHSHMACHCGEEAMEKYNQILSHFIELELQAAVVKALGELGILLRWMEEML with polyhistidine tag at the C-terminus
Endotoxin	<0.1 EU per 1 µg of the protein by the LAL method.
Bio-activity	Measure by its ability to induce proliferation in BaF3 cells transfected with human IL-20 R alpha and human IL-20 R beta. The ED50 for this effect is <2 ng/mL.
Purity	>98% as determined by SDS-PAGE. Ni-NTA chromatography

 Tel: 1-631-559-9269 1-516-512-3133

 Email: info@creative-biomart.com  Fax: 1-631-938-8127

 45-1 Ramsey Road, Shirley, NY 11967, USA

Storage Buffer	The protein was lyophilized from a solution containing 1X PBS, pH 7.4.
Reconstitution	It is recommended to reconstitute the lyophilized protein in sterile H ₂ O to a concentration not less than 100 µg/mL and incubate the stock solution for at least 20 min to ensure sufficient re-dissolved.
Storage	Lyophilized protein should be stored at -20°C. Upon reconstitution, protein aliquots should be stored at -20°C or -80°C.
Notes	Please use within one month after protein reconstitution.

GENE INFORMATION

Gene Name	Il20 interleukin 20 [<i>Mus musculus</i> (house mouse)]
Official Symbol	Il20
Synonyms	If2d; Zcyto10
Gene ID	58181
mRNA Refseq	NM_001311091.1
Protein Refseq	NP_001298020.1
UniProt ID	Q9JKV9

 Tel: 1-631-559-9269 1-516-512-3133

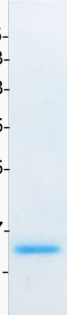
 Email: info@creative-biomart.com  Fax: 1-631-938-8127

 45-1 Ramsey Road, Shirley, NY 11967, USA



kDa

75-
63-
48-
35-
25-
17-
11-



Tel: 1-631-559-9269 1-516-512-3133

Email: info@creative-biomart.com Fax: 1-631-938-8127

45-1 Ramsey Road, Shirley, NY 11967, USA