

Recombinant Rat Il20ra protein, His & T7-tagged

Cat. No. Il20ra-1327R Lot. No. (See product label)

SPECIFICATION

| | |
|-------------------------|---|
| Product Overview | Recombinant Rat Il20ra aa. (Tyr273~Ser543 (Accession # D3ZJZ2) fused with N-terminal His & T7 tag was produced in E. coli cells. |
| Species | Rat |
| Source | E.coli |
| ProteinLength | Tyr273~Ser543 |
| Form | Freeze-dried powder |
| Molecular Mass | Predicted Molecular Mass: 34.8kDa |
| Endotoxin | <1.0EU per 1g (determined by the LAL method) |
| Purity | >95% |
| Characteristic | The isoelectric point is 4.7. |
| Applications | SDS-PAGE; WB; ELISA; IP. |
| Stability | The thermal stability is described by the loss rate. The loss rate was determined by accelerated thermal degradation test, that is, incubate the protein at 37°C for 48h, and no obvious degradation and precipitation were observed. The loss rate is less than 5% within the expiration date under appropriate storage condition. |

 Tel: 1-631-559-9269 1-516-512-3133

 Email: info@creative-biomart.com  Fax: 1-631-938-8127

 45-1 Ramsey Road, Shirley, NY 11967, USA

| | |
|-----------------------|--|
| Storage | Avoid repeated freeze/thaw cycles. Store at 2-8°C for one month. Aliquot and store at -80°C for 12 months. |
| Storage buffer | Supplied as lyophilized form in PBS, pH7.4, containing 5% trehalose, 0.01% sarcosyl |
| Reconstitution | Reconstitute in 20mM Tris, 150mM NaCl (pH8.0) to a concentration of 0.1-1.0 mg/mL. Do not vortex |

GENE INFORMATION

| | |
|------------------------|---|
| Gene Name | Il20ra interleukin 20 receptor subunit alpha [<i>Rattus norvegicus</i> (Norway rat)] |
| Official Symbol | Il20ra |
| Synonyms | Il20ra; interleukin 20 receptor subunit alpha; interleukin-20 receptor subunit alpha; interleukin 20 receptor alpha subunit; interleukin 20 receptor, alpha |
| Gene ID | 308716 |
| mRNA Refseq | NM_001107521.1 |
| Protein Refseq | NP_001100991.1 |
| UniProt ID | D3ZJZ2 |

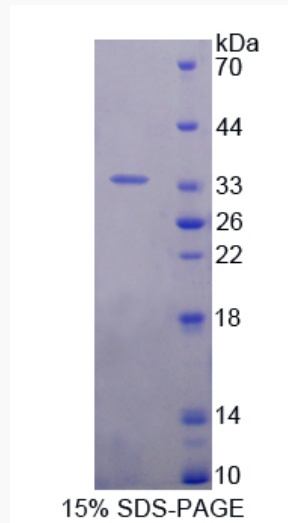
 Tel: 1-631-559-9269 1-516-512-3133

 Email: info@creative-biomart.com  Fax: 1-631-938-8127

 45-1 Ramsey Road, Shirley, NY 11967, USA



SDS-PAGE



Tel: 1-631-559-9269 1-516-512-3133

Email: info@creative-biomart.com Fax: 1-631-938-8127

45-1 Ramsey Road, Shirley, NY 11967, USA