

Recombinant Mouse Il21 Protein (Pro25-Ser146), N-His tagged

Cat. No. II21-6742M Lot. No. (See product label)

SPECIFICATION

Product Overview	Recombinant mouse Il21 (Pro25-Ser146) fused with the N-terminal His tag was expressed in E. coli.
Species	Mouse
Source	E.coli
ProteinLength	Pro25-Ser146
Description	Enables cytokine receptor binding activity. Involved in cellular response to virus; lymphocyte activation involved in immune response; and positive regulation of immunoglobulin production. Acts upstream of or within positive regulation of cytokine production; positive regulation of natural killer cell differentiation; and positive regulation of natural killer cell mediated cytotoxicity. Predicted to be located in extracellular space. Is expressed in ductus deferens; epididymis; and testis. Human ortholog (s) of this gene implicated in asthma; common variable immunodeficiency; hepatocellular carcinoma; and systemic lupus erythematosus. Orthologous to human IL21 (interleukin 21).
Form	Lyophilized powder/frozen liquid
Molecular Mass	16.52 kDa
Purity	> 90 % as determined by SDS-PAGE

 Tel: 1-631-559-9269 1-516-512-3133

 Email: info@creative-biomart.com  Fax: 1-631-938-8127

 45-1 Ramsey Road, Shirley, NY 11967, USA

Notes	For research use only.
Storage	Use a manual defrost freezer and avoid repeated freeze thaw cycles. Store at 2 to 8 centigrade for one week. Store at -20 to -80 centigrade for twelve months from the date of receipt.
Storage Buffer	Lyophilized from PBS, pH 7.4, 0.02 % NLS, 1 mM EDTA, 4 % trehalose, 1 % mannitol.
Reconstitution	Reconstitute in sterile water for a stock solution.
Shipping	They are shipped out with dry ice/blue ice unless customers require otherwise.

GENE INFORMATION

Gene Name	IL21 interleukin 21 [<i>Mus musculus</i> (house mouse)]
Official Symbol	IL21
Synonyms	IL21; interleukin 21; IL-21; interleukin-21
Gene ID	60505
mRNA Refseq	NM_021782
Protein Refseq	NP_068554
UniProt ID	Q9ES17

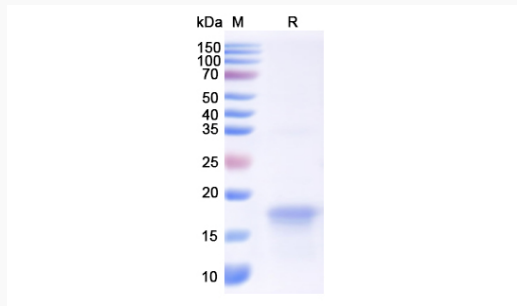
 Tel: 1-631-559-9269 1-516-512-3133

 Email: info@creative-biomart.com  Fax: 1-631-938-8127

 45-1 Ramsey Road, Shirley, NY 11967, USA



SDS-PAGE



Tel: 1-631-559-9269 1-516-512-3133

Email: info@creative-biomart.com Fax: 1-631-938-8127

45-1 Ramsey Road, Shirley, NY 11967, USA