

Recombinant Active Mouse IL22 Protein, His-tagged(C-ter)

Cat. No. IL22-178M Lot. No. (See product label)

SPECIFICATION

Product Overview	Recombinant Active Mouse IL22 Protein with His tag (C-ter) was expressed in E. coli.
Species	Mouse
Source	E.coli
Description	<p>Predicted to enable cytokine activity. Acts upstream of or within several processes, including negative regulation of inflammatory response; reactive oxygen species metabolic process; and regulation of tyrosine phosphorylation of STAT protein.</p> <p>Predicted to be located in extracellular space. Is expressed in retina and skin. Used to study liposarcoma. Human ortholog(s) of this gene implicated in asthma. Orthologous to human IL22 (interleukin 22).</p>
Form	Powder
Bio-activity	Determined by its ability to induce IL-10 secretion in COLO205 cells. The ED50 for this effect is < 0.3 ng/mL.
AA Sequence	MLPVNTRCKLEVSNFQQPYIVNRTFMLAKEASLADNNTDVRLLIGEKLFRGVSAKDQC YLMKQVLNFTLEDVLLPQSDRFQPYMQEVVPFLTKLSNQLSSCHISGDDQNIQKNVR RLKETVKKLGESGEIKAIGELDLLFMSLRNACV
Endotoxin	Endotoxin level is less than 0.1 EU/μg of the protein, as determined by the LAL test.
Purity	> 98% (by SDS-PAGE)

 Tel: 1-631-559-9269 1-516-512-3133

 Email: info@creative-biomart.com  Fax: 1-631-938-8127

 45-1 Ramsey Road, Shirley, NY 11967, USA

Applications	SDS-PAGE
Notes	For laboratory research only, not for drug, diagnostic or other use.
Storage	Lyophilized protein should be stored at -20°C. After reconstitution, aliquot and store at -20°C or -80°C for up to one month. Storage in frost free freezers is not recommended. Avoid repeated freeze/thaw cycles. Suggest spin the vial prior to opening.
Storage Buffer	PBS (pH 7.4)
Reconstitution	It is recommended to reconstitute the lyophilized protein in sterile water to a concentration not less than 100 µg/mL and incubate the stock solution for at least 20 min at room temperature to make sure the protein is dissolved completely.

GENE INFORMATION

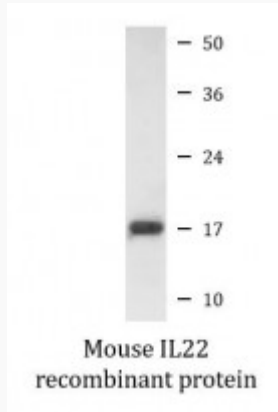
Gene Name	IL22 interleukin 22 [Mus musculus]
Official Symbol	IL22
Synonyms	IL22; interleukin 22; interleukin-22; ILTIF alpha; IL-TIF alpha; interleukin-22a; IL-10-related T-cell-derived-inducible factor; interleukin 10-related T cell-derived inducible factor; IL-22; Iltif; IL-22a; ILTIFa; MGC129416; MGC129417;
Gene ID	50929
mRNA Refseq	NM_016971
Protein Refseq	NP_058667

 Tel: 1-631-559-9269 1-516-512-3133

 Email: info@creative-biomart.com  Fax: 1-631-938-8127

 45-1 Ramsey Road, Shirley, NY 11967, USA

SDS-PAGE



 Tel: 1-631-559-9269 1-516-512-3133

 Email: info@creative-biomart.com  Fax: 1-631-938-8127

 45-1 Ramsey Road, Shirley, NY 11967, USA