

Recombinant Mouse IL22 protein

Cat. No. IL22-549M Lot. No. (See product label)

SPECIFICATION

Product Overview	Recombinant Mouse IL22 protein was expressed in Escherichia coli.
Species	Mouse
Source	E.coli
ProteinLength	146
Description	<p>IL-22 is belonging to IL-10 family of regulatory cytokines which includes IL-10, IL-19, IL-20, IL-22, IL-24 and IL-26. Members of this family share partial homology in their amino acid sequences, but they are dissimilar in their biological functions. Produced by T lymphocytes and dendritic cells, IL-10 contributes to the inflammatory response in vivo. IL-22 signals through CRF2-4 and IL-22. It along with IL-17 is rapidly produced by splenic LTI-like cells and can be also produced by Th17 cells. IL-22 likely plays a role in the coordinated response of both adaptive and innate immune systems. Recombinant mouse interleukin-22 contains 147 amino acids and it has approximately 81 % and 92 % amino acid sequence identity with human and rat IL-22.</p>
Form	Lyophilized from a 0.2µm filtered concentrated solution in 1 × PBS, pH 7.4.
Bio-activity	Fully biologically active when compared to standard. The ED50 as determined by inducing IL-10 secretion of human COLO 205 cells is less than 0.2 ng/ml, corresponding to a specific activity of > 5.0 × 10 ⁶ IU/mg.

 Tel: 1-631-559-9269 1-516-512-3133

 Email: info@creative-biomart.com  Fax: 1-631-938-8127

 45-1 Ramsey Road, Shirley, NY 11967, USA

Molecular Mass	Approximately 16.6 kDa, a single non-glycosylated polypeptide chain containing 146 amino acids.
AA Sequence	LPVNTRCKLEVSNFQQPYIVNRTFMLAKEASLADNNTDVRDIGEKLFGRGVSADKQCY LMKQVLNFTLEDVLLPQSDRFQPYMQEVVPPFLTKLSNQLSSCHISGDDQNIQKNVRR LKETVKKLGESGEIKAIGELDLLFMSLRNACV
Endotoxin	Less than 1 EU/μg of rMuIL-22 as determined by LAL method.
Purity	>96% by SDS-PAGE and HPLC analysis.
Storage	Use a manual defrost freezer and avoid repeated freeze-thaw cycles. 12 months from date of receipt, -20 to -70 centigrade as supplied. 1 month, 2 to 8 centigrade under sterile conditions after reconstitution. 3 months, -20 to -70 centigrade under sterile conditions after reconstitution.
Reconstitution	We recommend that this vial be briefly centrifuged prior to opening to bring the contents to the bottom. Reconstitute in sterile distilled water or aqueous buffer containing 0.1 % BSA to a concentration of 0.1-1.0 mg/mL. Stock solutions should be apportioned into working aliquots and stored at ≤-20centigrade. Further dilutions should be made in appropriate buffered solutions.

GENE INFORMATION

Gene Name	IL22
Official Symbol	IL22
Synonyms	IL22; interleukin 22; interleukin-22; ILTIF alpha; IL-TIF alpha; interleukin-22a; IL-10-related T-cell-derived-inducible factor; interleukin 10-related T cell-derived inducible factor; IL-22; Iltif; IL-22a; ILTIFa; MGC129416; MGC129417;

 Tel: 1-631-559-9269 1-516-512-3133

 Email: info@creative-biomart.com  Fax: 1-631-938-8127

 45-1 Ramsey Road, Shirley, NY 11967, USA

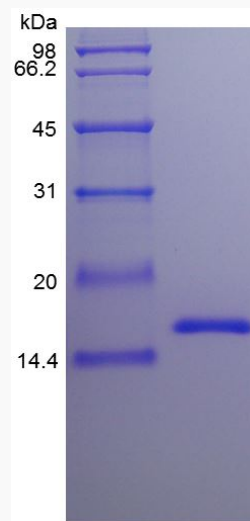
Gene ID 50929

mRNA Refseq NM_016971

Protein Refseq NP_058667

UniProt ID Q9JJY9

SDS-PAGE of I122-549M



Tel: 1-631-559-9269 1-516-512-3133

Email: info@creative-biomart.com Fax: 1-631-938-8127

45-1 Ramsey Road, Shirley, NY 11967, USA