

Recombinant Rat Il22 protein

Cat. No. II22-582R Lot. No. (See product label)

SPECIFICATION

| | |
|-------------------------|--|
| Product Overview | Recombinant Rat Il22 protein was expressed in Escherichia coli. |
| Species | Rat |
| Source | E.coli |
| ProteinLength | 146 |
| Description | <p>IL-22 is belonging to IL-10 family of regulatory cytokines which includes IL-10, IL-19, IL-20, IL-22, IL-24 and IL-26. Members of this family share partial homology in their amino acid sequences, but they are dissimilar in their biological functions. Produced by T lymphocytes and dendritic cells, IL-10 contributes to the inflammatory response in vivo. IL-22 signals through CRF2-4 and IL-22. It along with IL-17 is rapidly produced by splenic LTI-like cells and can be also produced by Th17 cells and likely plays a role in the coordinated response of both adaptive and innate immune systems. Recombinant rat Interleukin-22 contains 146 amino acids and it has approximately 79 % and 92 % amino acid sequence identity with human and murine IL-22.</p> |
| Form | Lyophilized from a 0.2µm filtered concentrated solution in PBS, pH 7.4. |
| Bio-activity | Fully biologically active when compared to standard. The ED50 as determined by inducing IL-10 secretion of human COLO 205 cells is less than 0.5 ng/ml, corresponding to a specific activity of > 2.0 × 10 ⁶ IU/mg. |

 Tel: 1-631-559-9269 1-516-512-3133

 Email: info@creative-biomart.com  Fax: 1-631-938-8127

 45-1 Ramsey Road, Shirley, NY 11967, USA

| | |
|-----------------------|---|
| Molecular Mass | Approximately 16.6 kDa, a single non-glycosylated polypeptide chain containing 146 amino acids. |
| AA Sequence | LPINSQCKLEAANFQQPYIVNRTFMLAKEASLADNNTDVRLLIGEELFRGVKAKDQCYL MKQVLNFTLEDVLLPQSDRFQPYMQEVPFLTKLSIHLSPCHISGDDQNIQKNVRQL KETVQKLGESGEIKAIGELDLLFMSLRNACV |
| Endotoxin | Less than 1 EU/μg of rRtIL-22 as determined by LAL method. |
| Purity | >97% by SDS-PAGE and HPLC analysis. |
| Storage | Use a manual defrost freezer and avoid repeated freeze-thaw cycles. 12 months from date of receipt, -20 to -70 centigrade as supplied. 1 month, 2 to 8 centigrade under sterile conditions after reconstitution. 3 months, -20 to -70 centigrade under sterile conditions after reconstitution. |
| Reconstitution | We recommend that this vial be briefly centrifuged prior to opening to bring the contents to the bottom. Reconstitute in sterile distilled water or aqueous buffer containing 0.1 % BSA to a concentration of 0.1-1.0 mg/mL. Stock solutions should be apportioned into working aliquots and stored at ≤-20 centigrade. Further dilutions should be made in appropriate buffered solutions. |

GENE INFORMATION

| | |
|------------------------|------------------------|
| Gene Name | IL22 |
| Official Symbol | IL22 |
| Synonyms | Cytokine Zcyto 18, TIF |
| Gene ID | 500836 |

 Tel: 1-631-559-9269 1-516-512-3133

 Email: info@creative-biomart.com  Fax: 1-631-938-8127

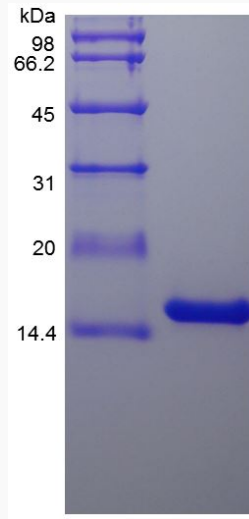
 45-1 Ramsey Road, Shirley, NY 11967, USA

mRNA Refseq [NM_001191988](#)

Protein Refseq [NP_001178917](#)

UniProt ID [Q198B4](#)

SDS-PAGE of II22-582R



 Tel: 1-631-559-9269 1-516-512-3133

 Email: info@creative-biomart.com  Fax: 1-631-938-8127

 45-1 Ramsey Road, Shirley, NY 11967, USA