

Recombinant Mouse Il22ra1 protein, His-tagged

Cat. No. Il22ra1-1321M Lot. No. (See product label)

SPECIFICATION

Product Overview	Recombinant Mouse Il22ra1 aa. (Pro258~Cys552 fused with N-terminal His tag was produced in E. coli cells.
Species	Mouse
Source	E.coli
ProteinLength	Pro258~Cys552
Form	Freeze-dried powder
Molecular Mass	40kDa as determined by SDS-PAGE reducing conditions.
Endotoxin	<1.0EU per 1g (determined by the LAL method)
Purity	>95%
Characteristic	The isoelectric point is 5.0.
Applications	Positive Control; Immunogen; SDS-PAGE; WB.
Stability	The thermal stability is described by the loss rate. The loss rate was determined by accelerated thermal degradation test, that is, incubate the protein at 37°C for 48h, and no obvious degradation and precipitation were observed. The loss rate is less than 5% within the expiration date under appropriate storage condition.

 Tel: 1-631-559-9269 1-516-512-3133

 Email: info@creative-biomart.com  Fax: 1-631-938-8127

 45-1 Ramsey Road, Shirley, NY 11967, USA

Storage	Avoid repeated freeze/thaw cycles. Store at 2-8°C for one month. Aliquot and store at -80°C for 12 months.
Concentration	200µg/mL
Storage buffer	20mM Tris, 150mM NaCl, pH8.0, containing 1mM EDTA, 1mM DTT, 0.01% sarcosyl, 5% Trehalose and Proclin300.
Reconstitution	Reconstitute in 20mM Tris, 150mM NaCl (pH8.0) to a concentration of 0.1-1.0mg/mL. Do not vortex.

GENE INFORMATION

Gene Name	Il22ra1 interleukin 22 receptor, alpha 1 [<i>Mus musculus</i> (house mouse)]
Official Symbol	Il22ra1
Synonyms	Il22ra1; interleukin 22 receptor, alpha 1; Il22r; IL-22R; 9130219A07Rik; interleukin-22 receptor subunit alpha-1; IL-22 receptor subunit alpha-1; IL-22R-alpha-1; IL-22RA1; interleukin-22 receptor alpha chain
Gene ID	230828
mRNA Refseq	NM_178257.2
Protein Refseq	NP_839988.1
UniProt ID	Q80XZ4

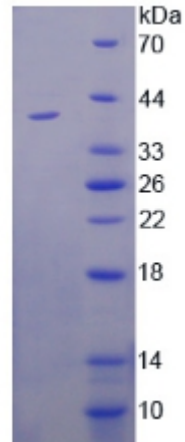
 Tel: 1-631-559-9269 1-516-512-3133

 Email: info@creative-biomart.com  Fax: 1-631-938-8127

 45-1 Ramsey Road, Shirley, NY 11967, USA



SDS-PAGE



Tel: 1-631-559-9269 1-516-512-3133

Email: info@creative-biomart.com Fax: 1-631-938-8127

45-1 Ramsey Road, Shirley, NY 11967, USA