

Recombinant Mouse Il22ra2 protein, His-tagged

Cat. No. Il22ra2-1323M Lot. No. (See product label)

SPECIFICATION

Product Overview	Recombinant Mouse Il22ra2 aa. (Gln31~Lys223 fused with N-terminal His tag was produced in E. coli cells.
Species	Mouse
Source	E.coli
ProteinLength	Gln31~Lys223
Form	Freeze-dried powder
Molecular Mass	26kDa as determined by SDS-PAGE reducing conditions
Endotoxin	<1.0EU per 1g (determined by the LAL method)
Purity	>95%
Characteristic	The isoelectric point is 9.2.
Applications	Positive Control; Immunogen; SDS-PAGE; WB.
Stability	The thermal stability is described by the loss rate. The loss rate was determined by accelerated thermal degradation test, that is, incubate the protein at 37°C for 48h, and no obvious degradation and precipitation were observed. The loss rate is less than 5% within the expiration date under appropriate storage condition.

 Tel: 1-631-559-9269 1-516-512-3133

 Email: info@creative-biomart.com  Fax: 1-631-938-8127

 45-1 Ramsey Road, Shirley, NY 11967, USA

Storage	Avoid repeated freeze/thaw cycles. Store at 2-8°C for one month. Aliquot and store at -80°C for 12 months.
Concentration	200g/mL
Storage buffer	20mM Tris, 150mM NaCl, pH8.0, containing 1mM EDTA, 1mM DTT, 0.01% sarcosyl, 5%Trehalose and Proclin300.
Reconstitution	Reconstitute in 20mM Tris, 150mM NaCl (pH8.0) to a concentration of 0.1-1.0 mg/mL. Do not vortex.

GENE INFORMATION

Gene Name	Il22ra2 interleukin 22 receptor, alpha 2 [<i>Mus musculus</i> (house mouse)]
Official Symbol	Il22ra2
Synonyms	Il22ra2; interleukin 22 receptor, alpha 2; CRF2X; CRF2-10; CRF2-s1; Il-22bp; interleukin-22 receptor subunit alpha-2; IL-22 receptor subunit alpha-2; IL-22R-alpha-2; IL-22RA2; IL22BP; cytokine receptor family II soluble 1; cytokine receptor family type 2, soluble 1; interleukin-22-binding protein; zcytoR16
Gene ID	237310
mRNA Refseq	NM_178258.5
Protein Refseq	NP_839989.2
UniProt ID	Q80XF5

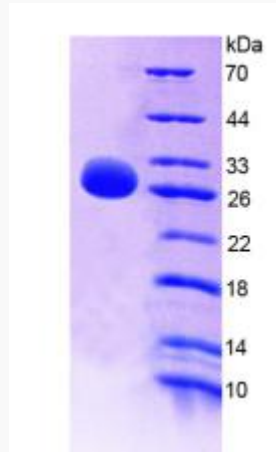
 Tel: 1-631-559-9269 1-516-512-3133

 Email: info@creative-biomart.com  Fax: 1-631-938-8127

 45-1 Ramsey Road, Shirley, NY 11967, USA



SDS-PAGE



Tel: 1-631-559-9269 1-516-512-3133

Email: info@creative-biomart.com Fax: 1-631-938-8127

45-1 Ramsey Road, Shirley, NY 11967, USA