

Recombinant Human IL23A Protein, GST-tagged

Cat. No. IL23A-053H Lot. No. (See product label)

SPECIFICATION

Product Overview	Human IL23A full-length ORF (NP_057668.1, 1 a.a. - 189 a.a.) recombinant protein with GST-tag at N-terminal was expressed in Wheat Germ.
Species	Human
Source	Wheat Germ
Description	This gene encodes a subunit of the heterodimeric cytokine interleukin 23 (IL23). IL23 is composed of this protein and the p40 subunit of interleukin 12 (IL12B). The receptor of IL23 is formed by the beta 1 subunit of IL12 (IL12RB1) and an IL23 specific subunit, IL23R. Both IL23 and IL12 can activate the transcription activator STAT4, and stimulate the production of interferon-gamma (IFNG). In contrast to IL12, which acts mainly on naive CD4(+) T cells, IL23 preferentially acts on memory CD4(+) T cells.
Molecular Mass	47.1 kDa
AA Sequence	MLGSRAVMLLLLLPWTAQGRAVPGGSSPAWTQCQQLSQKLCTLAWSAHPLVGHM DLREEGDEETTNDVPHIQCGDGDGCDPQGLRDNSQFCLQRHQQGLIFYEKLLGSDIFTG EPSLLPDSVPGQLHASLLGLSPLLQPEGHHWETQQIPSLSPSQPWQRLLLLRFKILRS LQAFVAVAARVFAHGAATLSP
Applications	Enzyme-linked Immunoabsorbent Assay Western Blot (Recombinant protein) Antibody Production

 Tel: 1-631-559-9269 1-516-512-3133

 Email: info@creative-biomart.com  Fax: 1-631-938-8127

 45-1 Ramsey Road, Shirley, NY 11967, USA

Protein Array

Storage Store at -80 centigrade. Aliquot to avoid repeated freezing and thawing.

Storage Buffer 50 mM Tris-HCl, 10 mM reduced Glutathione, pH=8.0 in the elution buffer.

GENE INFORMATION

Gene Name [IL23A interleukin 23 subunit alpha \[Homo sapiens \(human\) \]](#)

Official Symbol [IL23A](#)

Synonyms

IL23A; interleukin 23 subunit alpha; P19; SGRF; IL-23; IL-23A; IL23P19; interleukin-23 subunit alpha; IL-23 subunit alpha; IL-23-A; IL-23p19; JKA3 induced upon T-cell activation; interleukin 23 p19 subunit; interleukin 23, alpha subunit p19; interleukin-23 subunit p19; interleukin-six, G-CSF related factor

Gene ID [51561](#)

mRNA Refseq [NM_016584](#)

Protein Refseq [NP_057668](#)

MIM [605580](#)

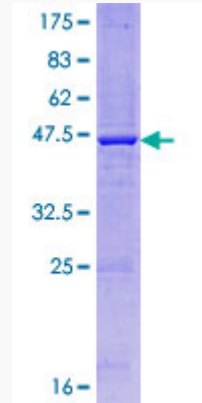
UniProt ID [Q9NPF7](#)

 Tel: 1-631-559-9269 1-516-512-3133

 Email: info@creative-biomart.com  Fax: 1-631-938-8127

 45-1 Ramsey Road, Shirley, NY 11967, USA

SDS-PAGE



12.5 % SDS-PAGE Stained with Coomassie Blue.

 Tel: 1-631-559-9269 1-516-512-3133

 Email: info@creative-biomart.com  Fax: 1-631-938-8127

 45-1 Ramsey Road, Shirley, NY 11967, USA