

Recombinant Human IL23A&IL12B Protein, His-tagged

Cat. No. IL23A-23H Lot. No. (See product label)

SPECIFICATION

| | |
|-------------------------|-----------------------------------------------------------------------------------------------------------------------------------------------------------------------------------------------------------------------------------------------------------------------------------------------------------------------------------------------------------------------------------------------------------------------------------------------------------------------------------------------------------------------------------------------------------------------------------------------------------------------------------------------|
| Product Overview | Recombinant Human IL23A(Arg 20 - Pro 189)&IL12B(Ile 23 - Ser 328), Subunit IL-23 alpha is fused with his-tag at the N-terminus and subunit IL-12 beta contains no tag was expressed in HEK293. |
| Species | Human |
| Source | HEK293 |
| ProteinLength | IL23A(Arg 20 - Pro 189)&IL12B(Ile 23 - Ser 328) |
| Description | Interleukin-23 subunit alpha (IL-23 alpha) can associates with IL12B to form the IL-23 interleukin, a heterodimeric cytokine which functions in innate and adaptive immunity. IL-23 may constitute with IL-17 an acute response to infection in peripheral tissues. IL-23 binds to a heterodimeric receptor complex composed of IL12RB1 and IL23R, activates the Jak-Stat signaling cascade, stimulates memory rather than naive T-cells and promotes production of proinflammatory cytokines. IL-23 induces autoimmune inflammation and thus may be responsible for autoimmune inflammatory diseases and may be important for tumorigenesis. |
| Form | Lyophilized from 0.22 µm filtered solution in PBS, pH7.4. Normally trehalose is added as protectant before lyophilization. |
| Molecular Mass | The protein has a calculated MW of 19.5 kDa (IL23A) & 34.7 kDa (IL12B). The protein migrates as 20 kDa (IL23A) & 40-45 kDa (IL12B) on a SDS-PAGE gel under reducing (R) condition due to glycosylation. |

 Tel: 1-631-559-9269 1-516-512-3133

 Email: info@creative-biomart.com  Fax: 1-631-938-8127

 45-1 Ramsey Road, Shirley, NY 11967, USA

| | |
|------------------|----------------------------------------------------------------------------------------------------------------------------------------------------------------------------------------------------------------------------------------------------------------------------------------------------------------------------------------------------------------|
| Endotoxin | Less than 1.0 EU per µg by the LAL method. |
| Purity | >95% as determined by SDS-PAGE. |
| Storage | <p>For long term storage, the product should be stored at lyophilized state at -20 centigrade or lower.</p> <p>Please avoid repeated freeze-thaw cycles.</p> <p>No activity loss is observed after storage at:</p> <p>4-8 centigrade for 12 months in lyophilized state;</p> <p>-70 centigrade for 3 months under sterile conditions after reconstitution.</p> |

GENE INFORMATION

| | |
|------------------------|--------------------------------------------------------------------------------------------------------------------------------------------------------------------------------------------------------------------------------------------------------------------------------------------------------------------------------------------------------|
| Gene Name | IL23A interleukin 23, alpha subunit p19 [Homo sapiens] |
| Official Symbol | IL23A |
| Synonyms | IL23A; interleukin 23, alpha subunit p19; interleukin-23 subunit alpha; IL 23; IL 23A; IL23P19; interleukin six; G CSF related factor; P19; SGRF; IL-23-A; IL-23p19; IL-23 subunit alpha; interleukin 23 p19 subunit; interleukin-23 subunit p19; JKA3 induced upon T-cell activation; interleukin-six, G-CSF related factor; IL-23; IL-23A; MGC79388; |
| Gene ID | 51561 |
| mRNA Refseq | NM_016584 |
| Protein Refseq | NP_057668 |
| MIM | 605580 |

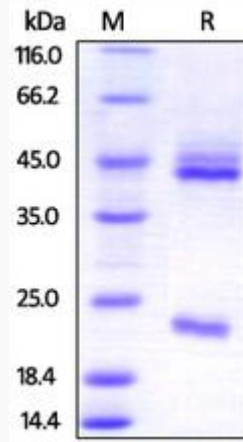
 Tel: 1-631-559-9269 1-516-512-3133

 Email: info@creative-biomart.com  Fax: 1-631-938-8127

 45-1 Ramsey Road, Shirley, NY 11967, USA

UniProt ID

Q9NPF7



 Tel: 1-631-559-9269 1-516-512-3133

 Email: info@creative-biomart.com  Fax: 1-631-938-8127

 45-1 Ramsey Road, Shirley, NY 11967, USA