

Recombinant Mouse Il23a protein, His & SUMO-tagged

Cat. No. Il23a-1784M Lot. No. (See product label)

SPECIFICATION

Product Overview	Recombinant Mouse Il23a aa. (Met1~Ala196) fused with N-terminal His & SUMO tag was produced in E. coli cells.
Species	Mouse
Source	E.coli
ProteinLength	Met1~Ala196
Form	Freeze-dried powder
Molecular Mass	36kDa as determined by SDS-PAGE reducing conditions.
Endotoxin	<1.0EU per 1ug (determined by the LAL method)
Purity	>95%
Applications	Positive Control; Immunogen; SDS-PAGE; WB.
Stability	The thermal stability is described by the loss rate. The loss rate was determined by accelerated thermal degradation test, that is, incubate the protein at 37°C for 48h, and no obvious degradation and precipitation were observed. The loss rate is less than 5% within the expiration date under appropriate storage condition.
Storage	Avoid repeated freeze/thaw cycles. Store at 2-8°C for one month. Aliquot and store at

 Tel: 1-631-559-9269 1-516-512-3133

 Email: info@creative-biomart.com  Fax: 1-631-938-8127

 45-1 Ramsey Road, Shirley, NY 11967, USA

-80°C for 12 months.

Concentration 200µg/mL

Storage buffer 20mM Tris, 150mM NaCl, pH8.0, containing 1mM EDTA, 1mM DTT, 0.01% sarcosyl, 5%Trehalose and Proclin300.

Reconstitution Reconstitute in 20mM Tris, 150mM NaCl (pH8.0) to a concentration of 0.1-1.0 mg/mL. Do not vortex.

Isoelectric Point 5.8

GENE INFORMATION

Gene Name [Il23a interleukin 23, alpha subunit p19 \[Mus musculus \(house mouse\) \]](#)

Official Symbol [Il23a](#)

Synonyms [Il23a](#); interleukin 23, alpha subunit p19; p19; IL-23; interleukin-23 subunit alpha; IL-23 subunit alpha; IL-23-A; IL-23p19; interleukin-23 subunit p19

Gene ID [83430](#)

mRNA Refseq [NM_031252.2](#)

Protein Refseq [NP_112542.1](#)

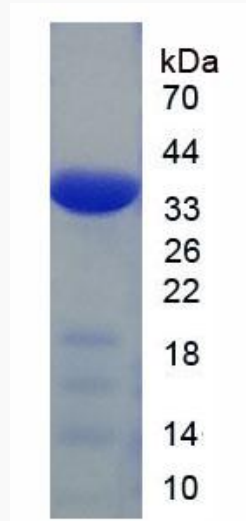
UniProt ID [Q9EQ14](#)

 Tel: 1-631-559-9269 1-516-512-3133

 Email: info@creative-biomart.com  Fax: 1-631-938-8127

 45-1 Ramsey Road, Shirley, NY 11967, USA

SDS-PAGE



 Tel: 1-631-559-9269 1-516-512-3133

 Email: info@creative-biomart.com  Fax: 1-631-938-8127

 45-1 Ramsey Road, Shirley, NY 11967, USA