

## Recombinant Mouse Il23a Protein (Val22-Ala196, Met23-Ser335)

Cat. No. Il23a-6745M Lot. No. (See product label)

### SPECIFICATION

|                         |  |
|-------------------------|--|
| <b>Product Overview</b> | Recombinant mouse Il23a (Val22-Ala196&Met23-Ser335) without tag was expressed in mammalian cells.  |
| <b>Species</b>          | Mouse  |
| <b>Source</b>           | Mammalian Cells  |
| <b>ProteinLength</b>    | Val22-Ala196, Met23-Ser335   |
| <b>Description</b>      | Contributes to interleukin-23 receptor binding activity. Involved in positive regulation of defense response to virus by host; positive regulation of immune response; and positive regulation of neutrophil chemotaxis. Acts upstream of or within T cell proliferation and positive regulation of transcription by RNA polymerase II. Located in extracellular space. Part of interleukin-23 complex. Is expressed in decidua; decidua basalis; embryo; and extraembryonic component. Orthologous to human IL23A (interleukin 23 subunit alpha). |
| <b>Form</b>             | Lyophilized powder/frozen liquid   |
| <b>Molecular Mass</b>   | 53.79 kDa  |
| <b>Purity</b>           | > 90 % as determined by SDS-PAGE   |
| <b>Notes</b>            | For research use only.   |

 Tel: 1-631-559-9269 1-516-512-3133

 Email: [info@creative-biomart.com](mailto:info@creative-biomart.com)  Fax: 1-631-938-8127

 45-1 Ramsey Road, Shirley, NY 11967, USA

|                       |   |
|-----------------------|---|
| <b>Storage</b>        | Use a manual defrost freezer and avoid repeated freeze thaw cycles. Store at 2 to 8 centigrade for one week. Store at -20 to -80 centigrade for twelve months from the date of receipt. |
| <b>Storage Buffer</b> | Supplied as solution form in PBS or lyophilized from PBS.   |
| <b>Reconstitution</b> | Reconstitute in sterile water for a stock solution.   |
| <b>Shipping</b>       | They are shipped out with dry ice/blue ice unless customers require otherwise.  |

## GENE INFORMATION

|                        |  |
|------------------------|--|
| <b>Gene Name</b>       | Il23a interleukin 23, alpha subunit p19 [ <i>Mus musculus</i> (house mouse) ]  |
| <b>Official Symbol</b> | Il23a  |
| <b>Synonyms</b>        | Il23a; interleukin 23, alpha subunit p19; p19; IL-23; interleukin-23 subunit alpha; IL-23 subunit alpha; IL-23-A; IL-23p19; interleukin-23 subunit p19 |
| <b>Gene ID</b>         | 83430  |
| <b>mRNA Refseq</b>     | NM_031252  |
| <b>Protein Refseq</b>  | NP_112542  |
| <b>UniProt ID</b>      | Q9EQ14   |

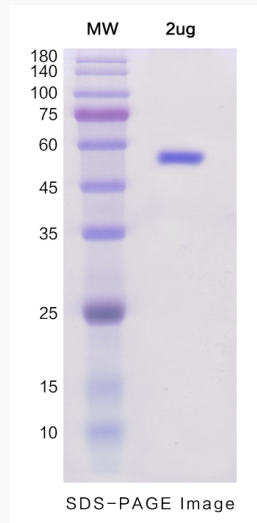
 Tel: 1-631-559-9269 1-516-512-3133

 Email: [info@creative-biomart.com](mailto:info@creative-biomart.com)  Fax: 1-631-938-8127

 45-1 Ramsey Road, Shirley, NY 11967, USA



SDS-PAGE



Tel: 1-631-559-9269 1-516-512-3133

Email: [info@creative-biomart.com](mailto:info@creative-biomart.com) Fax: 1-631-938-8127

45-1 Ramsey Road, Shirley, NY 11967, USA