

Recombinant Rat Il24 protein, His-tagged

Cat. No. Il24-30R Lot. No. (See product label)

SPECIFICATION

Product Overview	Recombinant Rat Il24(Gln29~Leu183) fused with His tag at N-terminal was expressed in E. coli.
Species	Rat
Source	E.coli
ProteinLength	Gln29~Leu183
Description	Il24 played an important role in many functions.
Form	20mM Tris, 150mM NaCl,pH8.0, containing 1mM EDTA, 1mM DTT, 0.01% SKL, 5% Trehalose and Proclin300
Molecular Mass	48.0kDa
Endotoxin	<1.0EU per 1g (determined by the LAL method)
Purity	> 95%
Applications	SDS-PAGE; WB; ELISA; IP; CoIP; Purification; Amine Reactive Labeling.
Stability	The thermal stability is described by the loss rate. The loss rate was determined by accelerated thermal degradation test, that is, incubate the protein at 37 centigrade for 48h, and no obvious degradation and precipitation were observed. The loss rate is

 Tel: 1-631-559-9269 1-516-512-3133

 Email: info@creative-biomart.com  Fax: 1-631-938-8127

 45-1 Ramsey Road, Shirley, NY 11967, USA

less than 5% within the expiration date under appropriate storage condition.

Storage

Avoid repeated freeze/thaw cycles. Store at 2-8 centigrade for one month. Aliquot and store at -80 centigrade for 12 months.

Reconstitution

Reconstitute in PBS or others.

GENE INFORMATION

Gene Name

IL24 interleukin 24 [*Rattus norvegicus*]

Official Symbol

IL24

Synonyms

IL24; interleukin 24; interleukin-24; IL-24; cytokine-like protein Mob-5; Mda7; Mda-7;

Gene ID

170819

mRNA Refseq

NM_133311

Protein Refseq

NP_579845

UniProt ID

Q9JI24

**Chromosome
Location**

13q13

Pathway

Jak-STAT signaling pathway, organism-specific biosystem; Jak-STAT signaling pathway, conserved biosystem;

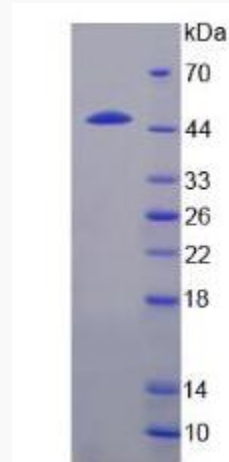
Function

cytokine activity; molecular_function;

 Tel: 1-631-559-9269 1-516-512-3133

 Email: info@creative-biomart.com  Fax: 1-631-938-8127

 45-1 Ramsey Road, Shirley, NY 11967, USA



Tel: 1-631-559-9269 1-516-512-3133

Email: info@creative-biomart.com Fax: 1-631-938-8127

45-1 Ramsey Road, Shirley, NY 11967, USA