

Recombinant Active Mouse IL25 Protein, His-tagged(C-ter)

Cat. No. IL25-183M Lot. No. (See product label)

SPECIFICATION

Product Overview	Recombinant Active Mouse IL25 Protein with His tag (C-ter) was expressed in E. coli.
Species	Mouse
Source	E.coli
Description	The protein encoded by this gene is a cytokine that shares sequence similarity with interleukin 17. This cytokine can induce NF-kappaB activation, and stimulate the production of interleukin 8. Both this cytokine and interleukin 17B are ligands for the cytokine receptor IL17BR. Studies of a similar gene in mice suggest that this cytokine may be a pro-inflammatory cytokine favoring the Th2-type immune response. Alternative splicing results in multiple transcript variants. [provided by RefSeq, Mar 2010]
Form	Powder
Bio-activity	Measured by its ability to induce CXCL1 secretion in HT-29 cells. The ED50 for this effect is < 1 ng/mL.
AA Sequence	MVSLRIQEGCShLPSCCPSKEQEPPEEWLKWSSASVSPPEPLSHTTHAESCRASK DGPLNSRAISPWSYELDRDLNRVPQDLYHARCLCPHCVSLQTGSHMDPLGNSVPLY HNQTVFYRRPCHGEEGTHRRYCLERRLYRVSLACVCVRPRVMA
Endotoxin	Endotoxin level is less than 0.1 EU/μg of the protein, as determined by the LAL test.

 Tel: 1-631-559-9269 1-516-512-3133

 Email: info@creative-biomart.com  Fax: 1-631-938-8127

 45-1 Ramsey Road, Shirley, NY 11967, USA

Purity	> 98% (by SDS-PAGE)
Applications	SDS-PAGE
Notes	For laboratory research only, not for drug, diagnostic or other use.
Storage	Lyophilized protein should be stored at -20°C. After reconstitution, aliquot and store at -20°C or -80°C for up to one month. Storage in frost free freezers is not recommended. Avoid repeated freeze/thaw cycles. Suggest spin the vial prior to opening.
Storage Buffer	20 mM Sodium citrate (pH 4.5) and 0.2 M NaCl.
Reconstitution	It is recommended to reconstitute the lyophilized protein in sterile water to a concentration not less than 100 µg/mL and incubate the stock solution for at least 20 min at room temperature to make sure the protein is dissolved completely.

GENE INFORMATION

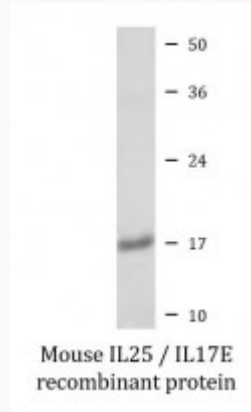
Gene Name	IL25 interleukin 25 [<i>Mus musculus</i>]
Official Symbol	IL25
Synonyms	IL25; interleukin 25; interleukin-25; interleukin 17E; IL17e; IL-17e;
Gene ID	140806
mRNA Refseq	NM_080729
Protein Refseq	NP_542767

 Tel: 1-631-559-9269 1-516-512-3133

 Email: info@creative-biomart.com  Fax: 1-631-938-8127

 45-1 Ramsey Road, Shirley, NY 11967, USA

SDS-PAGE



 Tel: 1-631-559-9269 1-516-512-3133

 Email: info@creative-biomart.com  Fax: 1-631-938-8127

 45-1 Ramsey Road, Shirley, NY 11967, USA