

Recombinant Active Mouse IL27 Protein, His-tagged(C-ter)

Cat. No. IL27-185M Lot. No. (See product label)

SPECIFICATION

Product Overview	Recombinant Active Mouse IL27 Protein with His tag (C-ter) was expressed in E. coli.
Species	Mouse
Source	E.coli
Description	The protein encoded by this gene is one of the subunits of a heterodimeric cytokine complex. This protein is related to interleukin 12A (IL12A). It interacts with Epstein-Barr virus induced gene 3 (EBI3), a protein similar to interleukin 12B (IL12B), and forms a complex that has been shown to drive rapid expansion of naive but not memory CD4(+) T cells. The complex is also found to synergize strongly with interleukin 12 to trigger interferon gamma (IFNG) production of naive CD4(+) T cells. The biological effects of this cytokine are mediated by the class I cytokine receptor (WSX1/TCRR). [provided by RefSeq, Jul 2008]
Form	Powder
Bio-activity	Determined by its ability to protect HepG2 cells infected with encephalomyocarditis (EMC) virus. The ED50 for this effect is < 5 ng/mL.
AA Sequence	MFPTDPLSLQELRREFTVSLYLARKLLSEVQGYVHSFAESRLPGVNLDLLPLGYHLP NVSLTFQAWHHLSDSERLCFLATTLRPFPA MLGGLGTQGTWTSSEREQLWAMRLD LRDLHRHLRFQVLAAGFKCSKEEEDKEEEEEEEEEEEKKLPLGALGGPNQVSSQVSW PQLLYTYQLLHSLVLSRAVRDLLLSLPRRPGSAWDS

 Tel: 1-631-559-9269 1-516-512-3133

 Email: info@creative-biomart.com  Fax: 1-631-938-8127

 45-1 Ramsey Road, Shirley, NY 11967, USA

Endotoxin	Endotoxin level is less than 0.1 EU/μg of the protein, as determined by the LAL test.
Purity	> 98% (by SDS-PAGE)
Applications	SDS-PAGE
Notes	For laboratory research only, not for drug, diagnostic or other use.
Storage	Lyophilized protein should be stored at -20°C. After reconstitution, aliquot and store at -20°C or -80°C for up to one month. Storage in frost free freezers is not recommended. Avoid repeated freeze/thaw cycles. Suggest spin the vial prior to opening.
Storage Buffer	PBS (pH 7.4)
Reconstitution	It is recommended to reconstitute the lyophilized protein in sterile water to a concentration not less than 100 μg/mL and incubate the stock solution for at least 20 min at room temperature to make sure the protein is dissolved completely.

GENE INFORMATION

Gene Name	Il27 interleukin 27 [Mus musculus]
Official Symbol	Il27
Synonyms	IL27; interleukin 27; interleukin-27 subunit alpha; IL27-A; IL-27-A; interleukin 30; IL-27 p28 subunit; IL-27 subunit alpha; p28; Il30; IL-27; IL-27p28;
Gene ID	246779
mRNA Refseq	NM_145636

 Tel: 1-631-559-9269 1-516-512-3133

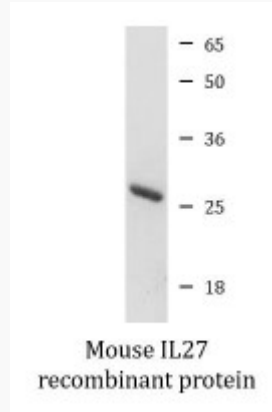
 Email: info@creative-biomart.com  Fax: 1-631-938-8127

 45-1 Ramsey Road, Shirley, NY 11967, USA

Protein Refseq

NP_663611

SDS-PAGE



 Tel: 1-631-559-9269 1-516-512-3133

 Email: info@creative-biomart.com  Fax: 1-631-938-8127

 45-1 Ramsey Road, Shirley, NY 11967, USA