

Active Recombinant Mouse Il27 Protein

Cat. No. II27-5204M Lot. No. (See product label)

SPECIFICATION

Product Overview	Mouse Il27 (Q8K3I6) recombinant protein expressed in Escherichia coli.
Species	Mouse
Source	E.coli
Description	Interleukin 27 (IL-27) is a member of the IL-12 cytokine family. It is a heterodimeric cytokine that is composed of two distinct genes, Epstein-Barr virus-induced gene 3 (EBI3) and IL-27p28. IL-27 is expressed by antigen presenting cells and interacts with a specific cell-surface receptor complex known as IL-27 receptor (IL-27R). This receptor consists of two proteins, IL-27 α and gp130. IL-27 induces differentiation of the diverse populations of T cells in the immune system and also upregulates IL-10.
Form	Lyophilized
Bio-activity	The activity is determined by the dose-dependent inhibition of IL-17A expression from mouse CD4 ⁺ splenocytes stimulated with TGF-beta and IL-6. 50 ng/mL of mouse p28 inhibits greater than 25% of IL-17A expression.
Molecular Mass	23.7 kDa
AA Sequence	MALVALSQPRVQCHASRYPVAVDCSWTPLQAPNSTRSTSFIATYRLGVATQQSQP CLQRSPQASRCTIPDVHLFSTVPYMLNVTAVHPGGASSLLAFVAERIIKPDPEGVR LRTAGQRLQVLWHPASWPFDPDIFSLKYRLRYRRRGASHFRQVGPIEATFTLRNS

 Tel: 1-631-559-9269 1-516-512-3133

 Email: info@creative-biomart.com  Fax: 1-631-938-8127

 45-1 Ramsey Road, Shirley, NY 11967, USA

KPHAKYCIQVSAQDLTDYGGKPSDWSLPGQVESAPHKP

Endotoxin < 0.1 EU/μg

Applications Functional Study
SDS-PAGE

Storage Store at -20 centigrade on dry atmosphere. After reconstitution with sterilized water, store at -20 centigrade. Aliquot to avoid repeated freezing and thawing.

Storage Buffer Lyophilized with Na₂PO₄, pH 7.5.

GENE INFORMATION

Gene Name [IL27 interleukin 27 \[Mus musculus \]](#)

Official Symbol [IL27](#)

Synonyms IL27; interleukin 27; interleukin-27 subunit alpha; IL27-A; IL-27-A; interleukin 30; IL-27 p28 subunit; IL-27 subunit alpha; p28; IL30; IL-27; IL-27p28;

Gene ID [246779](#)

mRNA Refseq [NM_145636](#)

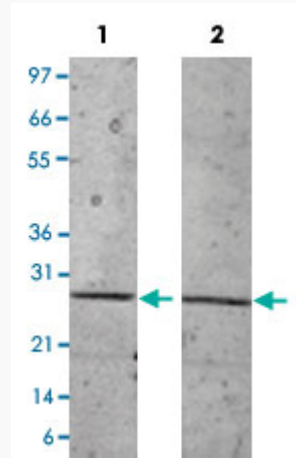
Protein Refseq [NP_663611](#)

 Tel: 1-631-559-9269 1-516-512-3133

 Email: info@creative-biomart.com  Fax: 1-631-938-8127

 45-1 Ramsey Road, Shirley, NY 11967, USA

**Quality Control
Testing**



1 µg/lane in 4-20% Tris-Glycine gel Stained with Coomassie Blue

Lane 1: non-reducing conditions

Lane 2: reducing conditions

 Tel: 1-631-559-9269 1-516-512-3133

 Email: info@creative-biomart.com  Fax: 1-631-938-8127

 45-1 Ramsey Road, Shirley, NY 11967, USA