

## Active Recombinant Human IL27RA protein, hFc-tagged

Cat. No. IL27RA-1629H Lot. No. (See product label)

### SPECIFICATION

<b>Product Overview</b>	Active Recombinant Human IL27RA protein(Met 1-Arg 514)(NP_004834.1) was expressed in HEK293, fused with the Fc region of human IgG1 at the C-terminus.
<b>Species</b>	Human
<b>Source</b>	HEK293
<b>ProteinLength</b>	1-514 aa
<b>Form</b>	Lyophilized from sterile PBS, pH 7.4, 8% trehalose, 8% mannitol.
<b>Bio-activity</b>	Measured by its binding ability in a functional ELISA. Immobilized human IL27 at 20 µg/ml (100 µl/well) can bind human IL27Ra with a linear ranger of 0.064-1.6 µg/ml.
<b>Molecular Mass</b>	The recombinant human IL27Ra/Fc is a disulfide-linked homodimeric protein after removal of the signal peptide. The reduced monomer consists of 722 amino acids and has a predicted molecular mass of 79 kDa. As a result of glycosylation, rh IL27Ra/Fc monomer migrates as an approximately 105-115 kDa band in SDS-PAGE under reducing conditions.
<b>Endotoxin</b>	< 1.0 EU per µg protein as determined by the LAL method.
<b>Purity</b>	> 95 % as determined by SDS-PAGE
<b>Storage</b>	Store it under sterile conditions at -20°C to -80°C upon receiving. Recommend to

 Tel: 1-631-559-9269 1-516-512-3133

 Email: [info@creative-biomart.com](mailto:info@creative-biomart.com)  Fax: 1-631-938-8127

 45-1 Ramsey Road, Shirley, NY 11967, USA

aliquot the protein into smaller quantities for optimal storage. Avoid repeated freeze-thaw cycles.

**Reconstitution**

It is recommended that sterile water be added to the vial to prepare a stock solution of 0.2 ug/ul. Centrifuge the vial at 4°C before opening to recover the entire contents.

## GENE INFORMATION

**Gene Name** [IL27RA interleukin 27 receptor, alpha \[ Homo sapiens \]](#)

**Official Symbol** [IL27RA](#)

**Synonyms**

IL27RA; interleukin 27 receptor, alpha; interleukin-27 receptor subunit alpha; CRL1; IL 27R; T cell cytokine receptor type 1; TCCR; WSX 1; WSX1; zcytor1; IL-27RA; IL-27R-alpha; IL-27R subunit alpha; cytokine receptor-like 1; class I cytokine receptor; IL-27 receptor subunit alpha; T-cell cytokine receptor type 1; type I T-cell cytokine receptor; IL27R;

**Gene ID** [9466](#)

**mRNA Refseq** [NM\\_004843](#)

**Protein Refseq** [NP\\_004834](#)

**MIM** [605350](#)

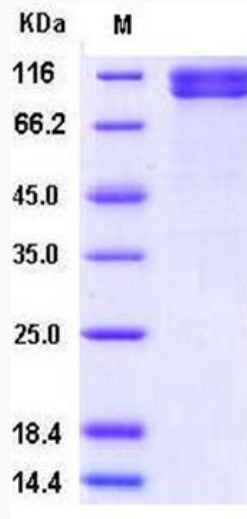
**UniProt ID** [Q6UWB1](#)

 Tel: 1-631-559-9269 1-516-512-3133

 Email: [info@creative-biomart.com](mailto:info@creative-biomart.com)  Fax: 1-631-938-8127

 45-1 Ramsey Road, Shirley, NY 11967, USA

**SDS-PAGE**



 Tel: 1-631-559-9269 1-516-512-3133

 Email: [info@creative-biomart.com](mailto:info@creative-biomart.com)  Fax: 1-631-938-8127

 45-1 Ramsey Road, Shirley, NY 11967, USA