

## Recombinant Mouse Il2ra Protein, His-tagged

**Cat. No.** Il2ra-1676M    **Lot. No.** (See product label)

### SPECIFICATION

<b>Product Overview</b>	Recombinant Mouse Il2ra Protein (Glu22-Lys236) with N-His tag was expressed in E. coli.
<b>Species</b>	Mouse
<b>Source</b>	E.coli
<b>ProteinLength</b>	Glu22-Lys236
<b>Description</b>	Enables interleukin-2 binding activity and interleukin-2 receptor activity. Acts upstream of or within several processes, including Notch signaling pathway; activation-induced cell death of T cells; and regulation of T cell proliferation. Located in external side of plasma membrane. Is expressed in bone marrow. Used to study Sjogren's syndrome and inflammatory bowel disease. Human ortholog(s) of this gene implicated in immunodeficiency 41; lymphopenia; multiple sclerosis; type 1 diabetes mellitus; and type 1 diabetes mellitus 10. Orthologous to human IL2RA (interleukin 2 receptor subunit alpha).
<b>Form</b>	Freeze-dried powder
<b>Molecular Mass</b>	Predicted Molecular Mass: 28.4 kDa Accurate Molecular Mass: 37 kDa
<b>Purity</b>	> 90%

 Tel: 1-631-559-9269    1-516-512-3133

 Email: [info@creative-biomart.com](mailto:info@creative-biomart.com)     Fax: 1-631-938-8127

 45-1 Ramsey Road, Shirley, NY 11967, USA

<b>Applications</b>	Cell culture; Activity Assays.
<b>Stability</b>	The thermal stability is described by the loss rate. The loss rate was determined by accelerated thermal degradation test, that is, incubate the protein at 37 centigrade for 48h, and no obvious degradation and precipitation were observed. The loss rate is less than 5% within the expiration date under appropriate storage condition.
<b>Storage</b>	Avoid repeated freeze/thaw cycles. Store at 2-8 centigrade for one month. Aliquot and store at -80 centigrade for 12 months.
<b>Storage Buffer</b>	20mM Tris, 150mM NaCl, pH8.0, containing 1mM EDTA, 1mM DTT, 0.01% SKL, 5% Trehalose and Proclin300.
<b>Reconstitution</b>	Reconstitute in 20mM Tris, 150mM NaCl (pH8.0) to a concentration of 0.1-1.0 mg/mL. Do not vortex.

## GENE INFORMATION

<b>Gene Name</b>	IL2ra interleukin 2 receptor, alpha chain [ <i>Mus musculus</i> (house mouse) ]
<b>Official Symbol</b>	IL2ra
<b>Synonyms</b>	IL2RA; interleukin 2 receptor, alpha chain; interleukin-2 receptor subunit alpha; IL2-RA; IL-2-RA; p55 chain; IL-2R alpha chain; IL-2R subunit alpha; IL-2 receptor subunit alpha; CD25; IL2r; Ly-43; MGC130561;
<b>Gene ID</b>	16184
<b>mRNA Refseq</b>	NM_008367
<b>Protein Refseq</b>	NP_032393

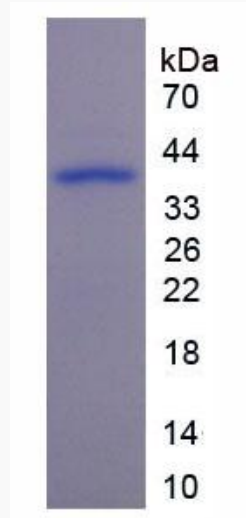
 Tel: 1-631-559-9269 1-516-512-3133

 Email: [info@creative-biomart.com](mailto:info@creative-biomart.com)  Fax: 1-631-938-8127

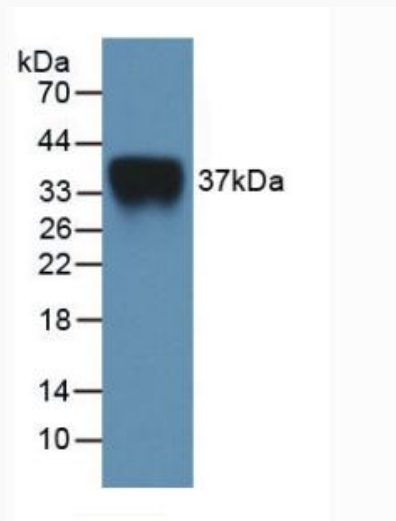
 45-1 Ramsey Road, Shirley, NY 11967, USA

UniProt ID

P01590



WB

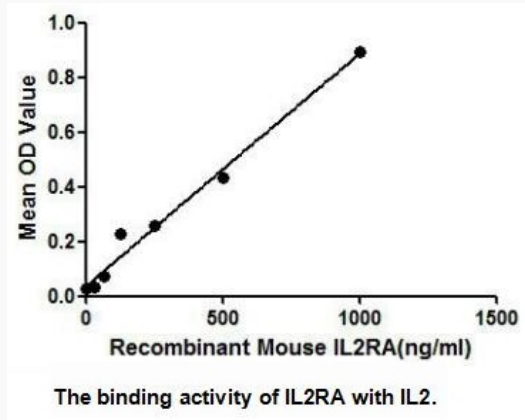


 Tel: 1-631-559-9269 1-516-512-3133

 Email: [info@creative-biomart.com](mailto:info@creative-biomart.com)  Fax: 1-631-938-8127

 45-1 Ramsey Road, Shirley, NY 11967, USA

**Bioactivity**



The binding activity of IL2RA with IL2.

 Tel: 1-631-559-9269 1-516-512-3133

 Email: [info@creative-biomart.com](mailto:info@creative-biomart.com)  Fax: 1-631-938-8127

 45-1 Ramsey Road, Shirley, NY 11967, USA