

Recombinant Rat Il2rb protein, His-tagged

Cat. No. Il2rb-22R Lot. No. (See product label)

SPECIFICATION

Product Overview	Recombinant Rat Il2rb(Ala27~Glu239) fused with His tag at N-terminal was expressed in E. coli.
Species	Rat
Source	E.coli
ProteinLength	27-239 a.a.
Form	PBS, pH7.4, containing 0.01% SKL, 1mM DTT, 5% Trehalose and Proclin300.
Molecular Mass	26.4kDa
Endotoxin	<1.0EU per 1g (determined by the LAL method)
Purity	> 95%
Applications	Positive Control; Immunogen; SDS-PAGE; WB. If bio-activity of the protein is needed, please check active protein.
Stability	The thermal stability is described by the loss rate. The loss rate was determined by accelerated thermal degradation test, that is, incubate the protein at 37 centigrade for 48h, and no obvious degradation and precipitation were observed. The loss rate is less than 5% within the expiration date under appropriate storage condition.

 Tel: 1-631-559-9269 1-516-512-3133

 Email: info@creative-biomart.com  Fax: 1-631-938-8127

 45-1 Ramsey Road, Shirley, NY 11967, USA

Storage	Avoid repeated freeze/thaw cycles. Store at 2-8 centigrade for one month. Aliquot and store at -80 centigrade for 12 months.
----------------	--

Reconstitution	Reconstitute in PBS or others.
-----------------------	--------------------------------

GENE INFORMATION

Gene Name	Il2rb interleukin 2 receptor, beta [<i>Rattus norvegicus</i>]
------------------	---

Official Symbol	Il2rb
------------------------	-------

Synonyms	IL2RB; interleukin 2 receptor, beta; interleukin-2 receptor subunit beta; IL-2RB; P70-75; IL-2R subunit beta; IL-2 receptor subunit beta; interleukin 2 receptor, beta chain; high affinity IL-2 receptor subunit beta; IL2RBC;
-----------------	---

Gene ID	25746
----------------	-------

mRNA Refseq	NM_013195
--------------------	-----------

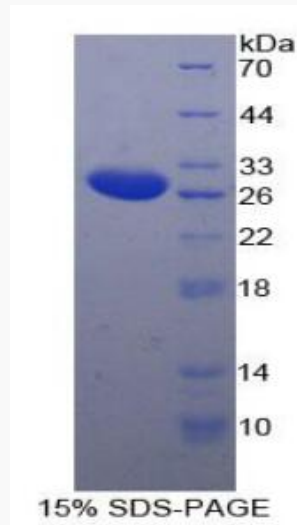
Protein Refseq	NP_037327
-----------------------	-----------

UniProt ID	P26896
-------------------	--------

 Tel: 1-631-559-9269 1-516-512-3133

 Email: info@creative-biomart.com  Fax: 1-631-938-8127

 45-1 Ramsey Road, Shirley, NY 11967, USA



Tel: 1-631-559-9269 1-516-512-3133

Email: info@creative-biomart.com Fax: 1-631-938-8127

45-1 Ramsey Road, Shirley, NY 11967, USA