

## Active Recombinant Mouse Il2rb protein, His-tagged

Cat. No. Il2rb-271R Lot. No. (See product label)

### SPECIFICATION

**Product Overview** Active Recombinant Mouse Il2rb protein(P16297)(27~240 aa), fused with N-terminal His tag, was expressed in E.coli.

**Species** Mouse

**Source** E.coli

**ProteinLength** 27-240 aa

**Form** Lyophilized from sterile 20mM Tris, 150mM NaCl, pH8.0, containing 1mM EDTA, 1mM DTT, 0.01% SKL, 5% Trehalose and Proclin300.

**Bio-activity** IL2RB (interleukin-2 receptor subunit beta) is a heterotrimeric protein expressed on the surface of certain immune cells, such as lymphocytes, which binds and responds to a cytokine called IL-2. Thus we have conducted a binding ELISA assay to detect the interaction of recombinant mouse IL2RB with recombinant mouse IL2. Briefly, IL2RB were diluted serially in PBS, with 0.01%BSA (pH 7.4). Duplicate samples of 100uL were then transferred to IL2-coated microtiter wells and incubated for 2h at 37°C. Wells were washed with PBST and incubated for 1h with anti-IL2RB pAb, then aspirated and washed 3 times. After incubation with HRP labelled secondary antibody, wells were aspirated and washed 3 times. With the addition of substrate solution, wells were incubated 15-25 minutes at 37°C. Finally, add 50µ stop solution to the wells and read at 450nm immediately. The binding activity of IL2RB with IL2 was shown and this effect was in a dose dependent manner.

 Tel: 1-631-559-9269 1-516-512-3133

 Email: [info@creative-biomart.com](mailto:info@creative-biomart.com)  Fax: 1-631-938-8127

 45-1 Ramsey Road, Shirley, NY 11967, USA

<b>Molecular Mass</b>	26.3kDa
<b>Purity</b>	> 90% as determined by SDS-PAGE.
<b>Storage</b>	Avoid repeated freeze/thaw cycles. Store at -20°C for 12 months. Aliquot and store at -80°C for 12 months.
<b>Reconstitution</b>	Reconstitute in 20mM Tris, 150mM NaCl (pH8.0) to a concentration of 0.1-1.0 mg/mL. Do not vortex.

## GENE INFORMATION

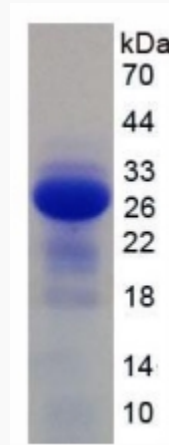
<b>Gene Name</b>	<a href="#">Il2rb interleukin 2 receptor, beta chain [ Mus musculus ]</a>
<b>Official Symbol</b>	<a href="#">Il2rb</a>
<b>Synonyms</b>	IL2RB; interleukin 2 receptor, beta chain; interleukin-2 receptor subunit beta; IL-2RB; p70-75; IL-2R subunit beta; IL-2/15 receptor-beta; IL-2 receptor beta chain; IL-15 receptor beta chain; IL-2 receptor subunit beta; high affinity IL-2 receptor subunit beta; p70; CD122; IL15Rbeta; IL-2Rbeta; IL-15Rbeta; IL-2/15Rbeta; MGC118674;
<b>Gene ID</b>	<a href="#">16185</a>
<b>mRNA Refseq</b>	<a href="#">NM_008368</a>
<b>Protein Refseq</b>	<a href="#">NP_032394</a>

 Tel: 1-631-559-9269 1-516-512-3133

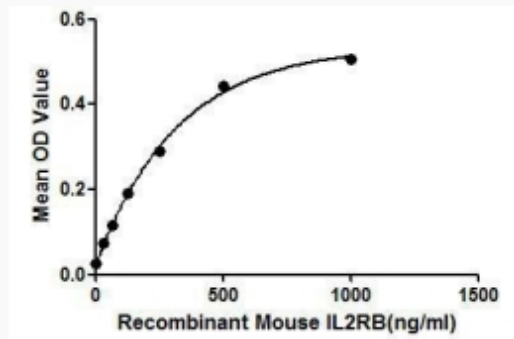
 Email: [info@creative-biomart.com](mailto:info@creative-biomart.com)  Fax: 1-631-938-8127

 45-1 Ramsey Road, Shirley, NY 11967, USA

**SDS-PAGE**



**Activity**



 Tel: 1-631-559-9269 1-516-512-3133

 Email: [info@creative-biomart.com](mailto:info@creative-biomart.com)  Fax: 1-631-938-8127

 45-1 Ramsey Road, Shirley, NY 11967, USA