

Recombinant Mouse Interleukin 2 Receptor, Gamma Chain

Cat. No. IL2rg-1716M Lot. No. (See product label)

SPECIFICATION

Species	Mouse
Source	Sf21 Cells
Description	The common gamma-chain (gamma(c)) is an indispensable subunit of the functional receptor complexes for IL-4, IL-7, IL-9, and IL-15 as well as IL-2. It is a cytokine receptor subunit that is located on the surface of certain sub-sets of lymphocytes (white blood cells). Common gamma-chain is critical for lymphocyte development.
Molecular Weight	The predicted molecular weight of Recombinant Mouse Common Gamma Chain is Mr 54.5 kDa. However, the actual molecular weight as observed by migration on SDS Page is Mr 60 kDa.
State Of Matter	Lyophilized.
Purity	>90% by SDS Page and analyzed by silver stain.
Endotoxin	<1.0 EU/g as determined by the LAL method.
Storage And Stability	This lyophilized protein is stable for six to twelve months when stored desiccated at -20°C to -70°C. After aseptic reconstitution, this protein may be stored at 2°C to 8°C for one month or at -20°C to -70°C in a manual defrost freezer. Avoid Repeated Freeze Thaw Cycles. See Product Insert for exact lot specific storage instructions.

 Tel: 1-631-559-9269 1-516-512-3133

 Email: info@creative-biomart.com  Fax: 1-631-938-8127

 45-1 Ramsey Road, Shirley, NY 11967, USA

GENE INFORMATION

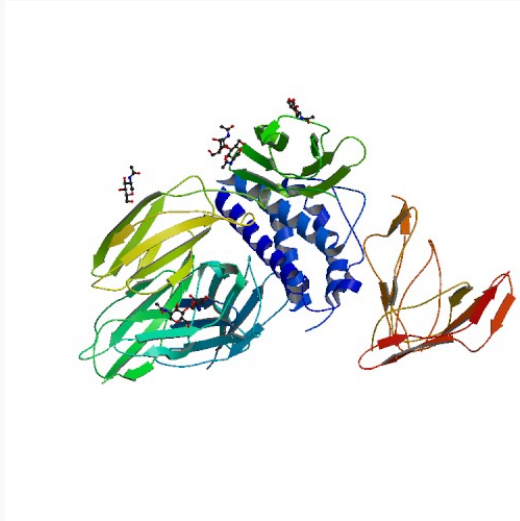
Gene Name	Il2rg interleukin 2 receptor, gamma chain [<i>Mus musculus</i>]
Synonyms	Il2rg; interleukin 2 receptor, gamma chain; gc; [g]c; CD132; gamma(c); common cytokine receptor gamma chain; common gamma chain; gamma C receptor
Gene ID	16186
mRNA Refseq	NM_013563
Protein Refseq	NP_038591
UniProt ID	P34902
Chromosome Location	X 38.0 cM
Pathway	Cytokine-cytokine receptor interaction; Endocytosis; Jak-STAT signaling pathway; Primary immunodeficiency
Function	cytokine receptor activity; interleukin-2 binding; protein binding; receptor activity

 Tel: 1-631-559-9269 1-516-512-3133

 Email: info@creative-biomart.com  Fax: 1-631-938-8127

 45-1 Ramsey Road, Shirley, NY 11967, USA

PDB rendering based
on 2b5i.



 Tel: 1-631-559-9269 1-516-512-3133

 Email: info@creative-biomart.com  Fax: 1-631-938-8127

 45-1 Ramsey Road, Shirley, NY 11967, USA