

Recombinant Active Mouse IL36A Protein, His-tagged(C-ter)

Cat. No. IL36a-196M Lot. No. (See product label)

SPECIFICATION

Product Overview	Recombinant Active Mouse IL36A Protein with His tag (C-ter) was expressed in E. coli.
Species	Mouse
Source	E.coli
Description	Enables cytokine activity. Acts upstream of or within positive regulation of interleukin-6 production. Located in extracellular space. Orthologous to human IL36A (interleukin 36 alpha).
Form	Powder
Bio-activity	Determined by its ability to induce IL-6 secretion in 3T3 cells. The ED50 for this effect is < 15 ng/mL. The specific activity of recombinant mouse IL-36 alpha is > 1 x 10 ⁵ IU/mg.
AA Sequence	MNKEKELRAASPSLRHVQDLSSRVWILQNNILTAVPRKEQTVPVTITLLPCQYLDLTLE TNRGDPTYMGVQRPMSCLFCTKDGEQPVQLQLGEGNIMEMYNKKEPVKASLFYHKK SGTTSTFESAAPGWFIAVCSKGSCLPLILTQELGEIFITDFEMIVVH
Endotoxin	Endotoxin level is less than 0.1 EU/μg of the protein, as determined by the LAL test.
Purity	> 98% (by SDS-PAGE)

 Tel: 1-631-559-9269 1-516-512-3133

 Email: info@creative-biomart.com  Fax: 1-631-938-8127

 45-1 Ramsey Road, Shirley, NY 11967, USA

Applications	SDS-PAGE
Notes	For laboratory research only, not for drug, diagnostic or other use.
Storage	Lyophilized protein should be stored at -20°C. After reconstitution, aliquot and store at -20°C or -80°C for up to one month. Storage in frost free freezers is not recommended. Avoid repeated freeze/thaw cycles. Suggest spin the vial prior to opening.
Storage Buffer	PBS (pH 7.4)
Reconstitution	It is recommended to reconstitute the lyophilized protein in sterile water to a concentration not less than 100 µg/mL and incubate the stock solution for at least 20 min at room temperature to make sure the protein is dissolved completely.

GENE INFORMATION

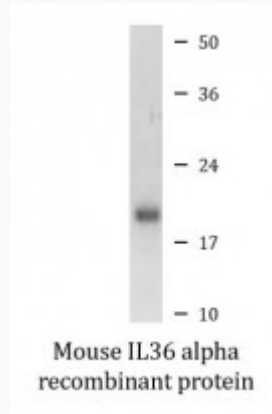
Gene Name	Il36a interleukin 36A [Mus musculus (house mouse)]
Official Symbol	Il36a
Synonyms	Il36a; interleukin 36A; Fil1; If36a; Il1f6; Il1f9; IL-1H1; IL1RP2;
Gene ID	54448
mRNA Refseq	NM_019450
Protein Refseq	NP_062323
UniProt ID	Q9JLA2

 Tel: 1-631-559-9269 1-516-512-3133

 Email: info@creative-biomart.com  Fax: 1-631-938-8127

 45-1 Ramsey Road, Shirley, NY 11967, USA

SDS-PAGE



 Tel: 1-631-559-9269 1-516-512-3133

 Email: info@creative-biomart.com  Fax: 1-631-938-8127

 45-1 Ramsey Road, Shirley, NY 11967, USA