

## Active Recombinant Mouse Il36a Protein (Met1-His160), C-His tagged, Animal-free, Carrier-free

Cat. No. Il36a-249M Lot. No. (See product label)

### SPECIFICATION

<b>Product Overview</b>	Recombinant Mouse Il36a Protein (Met1-His160) with C-His tag was expressed in E. coli and Animal-free as well as Carrier-free.
<b>Species</b>	Mouse
<b>Source</b>	E.coli
<b>ProteinLength</b>	Met1-His160
<b>Description</b>	Interleukin 36 alpha (IL-36 alpha) is a 17.76 kDa cytokine with 160 amino acid residues. IL-36 alpha is an IL-1 family member, which binds to the Interleukin-1 receptor and is expressed in the lung, stomach, and placenta. IL-36 alpha is critical in inflammatory responses and stimulates the production of proinflammatory cytokines, such as IL-12, IL-1 $\beta$ , IL-6, and TNF- $\alpha$ . It also induces the generation of IFN $\gamma$ , IL-4, and IL-17 in CD4+ T cells.
<b>Form</b>	Lyophilized
<b>Bio-activity</b>	Measure by its ability to induce IL-6 secretion in 3T3 cells. The ED50 for this effect is < 15 ng/mL. The specific activity of recombinant mouse IL-36 alpha is > 1 $\times$ 10 <sup>5</sup> IU/mg.
<b>Molecular Mass</b>	The protein has a calculated MW of 18.82 kDa. The protein migrates as 17-25 kDa under reducing condition (SDS-PAGE analysis).

 Tel: 1-631-559-9269 1-516-512-3133

 Email: [info@creative-biomart.com](mailto:info@creative-biomart.com)  Fax: 1-631-938-8127

 45-1 Ramsey Road, Shirley, NY 11967, USA

<b>Endotoxin</b>	< 0.1 EU/μg of the protein by the LAL method.
<b>Purity</b>	>98% as determined by SDS-PAGE analysis.
<b>Storage</b>	This product is stable after storage at: -20 centigrade for 12 months in lyophilized state from date of receipt. -20 or -80 centigrade for 1 month under sterile conditions after reconstitution. Avoid repeated freeze/thaw cycles.
<b>Storage Buffer</b>	Lyophilized from a 0.2 μm filtered solution of PBS, pH 7.4.
<b>Reconstitution</b>	It is recommended to reconstitute the lyophilized protein in sterile H <sub>2</sub> O to a concentration not less than 200 μg/mL and incubate the stock solution for at least 20 min to ensure sufficient re-dissolved.
<b>Shipping</b>	The product is shipped with polar packs. Upon receipt, store it immediately at -20 centigrade or lower for long term storage.

## GENE INFORMATION

<b>Gene Name</b>	<a href="#">Il36a interleukin 36A [ Mus musculus (house mouse) ]</a>
<b>Official Symbol</b>	<a href="#">Il36a</a>
<b>Synonyms</b>	Il36a; interleukin 36A; Fil1; If36a; Il1f6; Il1f9; IL-1H1; IL1RP2; interleukin-36 alpha; FIL1 epsilon; Fil1epsilon; IL-1 epsilon; IL-1F6; interleukin 1 family, member 6 (epsilon); interleukin 1 family, member 9; interleukin-1 epsilon; interleukin-1 family member 6; interleukin-1 homolog 1
<b>Gene ID</b>	<a href="#">54448</a>

 Tel: 1-631-559-9269 1-516-512-3133

 Email: [info@creative-biomart.com](mailto:info@creative-biomart.com)  Fax: 1-631-938-8127

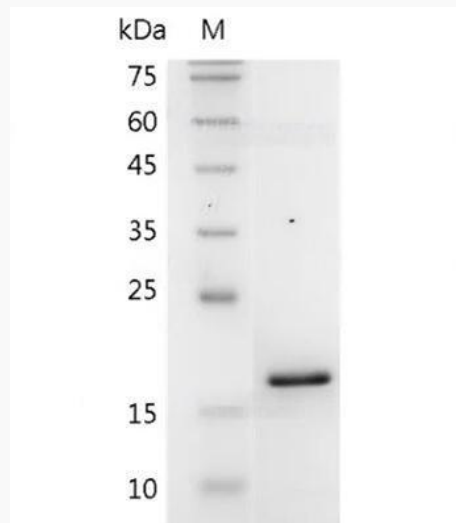
 45-1 Ramsey Road, Shirley, NY 11967, USA

mRNA Refseq [NM\\_019450](#)

Protein Refseq [NP\\_062323](#)

UniProt ID [Q9JLA2](#)

**SDS-PAGE analysis  
of recombinant  
mouse IL-36 Alpha.**



 Tel: 1-631-559-9269 1-516-512-3133

 Email: [info@creative-biomart.com](mailto:info@creative-biomart.com)  Fax: 1-631-938-8127

 45-1 Ramsey Road, Shirley, NY 11967, USA