

## Active Recombinant Mouse Il36g Protein (Gly13-Ser164), C-His tagged, Animal-free, Carrier-free

Cat. No. Il36g-81M Lot. No. (See product label)

### SPECIFICATION

<b>Product Overview</b>	Recombinant Mouse Il36g Protein (Gly13-Ser164) with C-His tag was expressed in E. coli and Animal-free as well as Carrier-free.
<b>Species</b>	Mouse
<b>Source</b>	E.coli
<b>ProteinLength</b>	Gly13-Ser164
<b>Description</b>	Interleukin 36 gamma (IL-36 gamma) is a 17.65 kDa cytokine with 159 amino acid residues. IL-36 gamma is a member of the IL-1 family and is mainly expressed in keratinocytes, bronchial epithelial cells, macrophages, and monocyte. This cytokine responds to multiple pathogen-associated molecular patterns (PAMPs) and participates in the inflammatory response. In addition, it also induces the production of pro-inflammatory cytokines like IL-12, IL-1 $\beta$ , IL-6, TNF- $\alpha$ , and IL-23.
<b>Form</b>	Lyophilized
<b>Bio-activity</b>	Measure by its ability to induce IL-6 secretion in 3T3 cells. The ED50 for this effect is < 15 ng/mL. The specific activity of recombinant mouse IL-36 gamma is > 6 $\times$ 10 <sup>4</sup> IU/mg.
<b>Molecular Mass</b>	The protein has a calculated MW of 18.27 kDa. The protein migrates about 17 kDa under reducing condition (SDS-PAGE analysis).

 Tel: 1-631-559-9269 1-516-512-3133

 Email: [info@creative-biomart.com](mailto:info@creative-biomart.com)  Fax: 1-631-938-8127

 45-1 Ramsey Road, Shirley, NY 11967, USA

<b>Endotoxin</b>	< 0.1 EU/μg of the protein by the LAL method.
<b>Purity</b>	>98% as determined by SDS-PAGE analysis.
<b>Storage</b>	This product is stable after storage at: -20 centigrade for 12 months in lyophilized state from date of receipt. -20 or -80 centigrade for 1 month under sterile conditions after reconstitution. Avoid repeated freeze/thaw cycles.
<b>Storage Buffer</b>	Lyophilized from a 0.2 μm filtered solution of PBS, pH 7.4.
<b>Reconstitution</b>	It is recommended to reconstitute the lyophilized protein in sterile H <sub>2</sub> O to a concentration not less than 200 μg/mL and incubate the stock solution for at least 20 min to ensure sufficient re-dissolved.
<b>Shipping</b>	The product is shipped with polar packs. Upon receipt, store it immediately at -20 centigrade or lower for long term storage.

## GENE INFORMATION

<b>Gene Name</b>	Il36g interleukin 36G [ <i>Mus musculus</i> (house mouse) ]
<b>Official Symbol</b>	Il36g
<b>Synonyms</b>	Il36g; interleukin 36G; If36g; Il1f9; IL-36gamma; interleukin-36 gamma; IL-1F9; interleukin 1 family, member 9
<b>Gene ID</b>	215257
<b>mRNA Refseq</b>	NM_153511

 Tel: 1-631-559-9269 1-516-512-3133

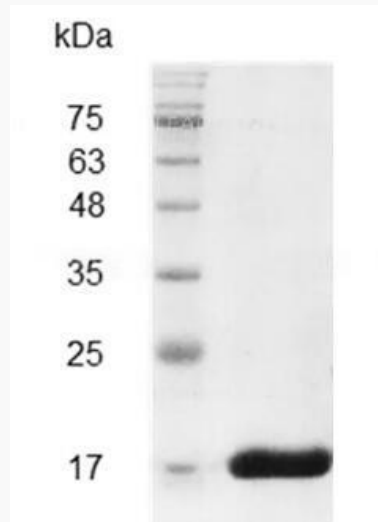
 Email: [info@creative-biomart.com](mailto:info@creative-biomart.com)  Fax: 1-631-938-8127

 45-1 Ramsey Road, Shirley, NY 11967, USA

Protein Refseq NP\_705731

UniProt ID Q8R460

SDS-PAGE analysis  
of recombinant  
mouse IL-36 gamma.



 Tel: 1-631-559-9269 1-516-512-3133

 Email: [info@creative-biomart.com](mailto:info@creative-biomart.com)  Fax: 1-631-938-8127

 45-1 Ramsey Road, Shirley, NY 11967, USA