

## Recombinant Mouse Il3ra protein, His-tagged

**Cat. No.** Il3ra-7059M    **Lot. No.** (See product label)

### SPECIFICATION

<b>Product Overview</b>	Recombinant Mouse Il3ra aa. (His167~Lys331 (Accession # P26952)) fused with N-terminal His tag was produced in E. coli cells.
<b>Species</b>	Mouse
<b>Source</b>	E.coli
<b>ProteinLength</b>	His167~Lys331
<b>Form</b>	Freeze-dried powder
<b>Molecular Mass</b>	22kDa as determined by SDS-PAGE reducing conditions
<b>Endotoxin</b>	<1.0EU per 1g (determined by the LAL method)
<b>Purity</b>	>95%
<b>Characteristic</b>	The isoelectric point is 6.4.
<b>Applications</b>	SDS-PAGE; WB; ELISA; IP.
<b>Stability</b>	The thermal stability is described by the loss rate. The loss rate was determined by accelerated thermal degradation test, that is, incubate the protein at 37°C for 48h, and no obvious degradation and precipitation were observed. The loss rate is less than 5% within the expiration date under appropriate storage condition.

 Tel: 1-631-559-9269    1-516-512-3133

 Email: [info@creative-biomart.com](mailto:info@creative-biomart.com)     Fax: 1-631-938-8127

 45-1 Ramsey Road, Shirley, NY 11967, USA

<b>Storage</b>	Avoid repeated freeze/thaw cycles. Store at 2-8°C for one month. Aliquot and store at -80°C for 12 months.
<b>Storage buffer</b>	Supplied as lyophilized form in PBS, pH7.4, containing 5% sucrose, 0.01% sarcosyl.
<b>Reconstitution</b>	Reconstitute in sterile PBS, pH7.2-pH7.4.

## GENE INFORMATION

<b>Gene Name</b>	Il3ra interleukin 3 receptor, alpha chain [ <i>Mus musculus</i> (house mouse) ]
<b>Official Symbol</b>	Il3ra
<b>Synonyms</b>	Il3ra; interleukin 3 receptor, alpha chain; CD123; SUT-1; CDw123; interleukin-3 receptor subunit alpha; IL-3 receptor alpha SP2 isoform; IL-3 receptor alpha chain; IL-3 receptor subunit alpha; IL-3R subunit alpha; IL-3R-alpha; IL-3RA; Il-3 alpha subunit; interleukin-3 receptor class II alpha chain
<b>Gene ID</b>	16188
<b>mRNA Refseq</b>	NM_008369.1
<b>Protein Refseq</b>	NP_032395.1
<b>UniProt ID</b>	P26952

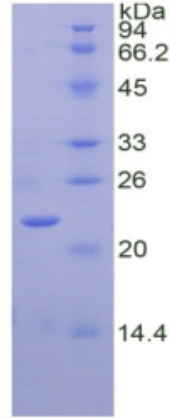
 Tel: 1-631-559-9269 1-516-512-3133

 Email: [info@creative-biomart.com](mailto:info@creative-biomart.com)  Fax: 1-631-938-8127

 45-1 Ramsey Road, Shirley, NY 11967, USA

**SDS-PAGE**

**Mouse IL3Ra**



15% SDS-PAGE

 Tel: 1-631-559-9269 1-516-512-3133

 Email: [info@creative-biomart.com](mailto:info@creative-biomart.com)  Fax: 1-631-938-8127

 45-1 Ramsey Road, Shirley, NY 11967, USA