

Recombinant Mouse Il5ra protein, His-tagged

Cat. No. Il5ra-5743M Lot. No. (See product label)

SPECIFICATION

Product Overview	Recombinant Mouse Il5ra protein(P21183)(Asp18-His339), fused with C-terminal His tag, was expressed in HEK293.
Species	Mouse
Source	HEK293
ProteinLength	Asp18-His339
Tag	C-His
Form	Supplied as 0.22µm filtered solution in 20mM Tris, 500mM NaCl (pH 7.4).
Bio-activity	Mouse IL-5 R alpha, His Tag immobilized on CM5 Chip can bind Mouse IL-5, His Tag with an affinity constant of 0.495 uM as determined in SPR assay (Biacore T200).
Molecular Mass	The protein has a predicted MW of 37.7 kDa. Due to glycosylation, the protein migrates to 50-60 kDa based on Tris-Bis PAGE result.
Endotoxin	Less than 1EU per µg by the LAL method.
Purity	> 95% as determined by Tris-Bis PAGE;> 95% as determined by HPLC
Storage	Valid for 12 months from date of receipt when stored at -80°C. Recommend to aliquot the protein into smaller quantities for optimal storage. Please do not repeated freeze-

 Tel: 1-631-559-9269 1-516-512-3133

 Email: info@creative-biomart.com  Fax: 1-631-938-8127

 45-1 Ramsey Road, Shirley, NY 11967, USA

thaw cycles.

Reconstitution

It is recommended that sterile water be added to the vial to prepare a stock solution of 0.2 ug/ul. Centrifuge the vial at 4°C before opening to recover the entire contents.

GENE INFORMATION

Gene Name [Il5ra interleukin 5 receptor, alpha \[Mus musculus \]](#)

Official Symbol [Il5ra](#)

Synonyms IL5RA; interleukin 5 receptor, alpha; interleukin-5 receptor subunit alpha; IL-5RA; IL-5R-alpha; IL-5R subunit alpha; IL-5 receptor alpha chain; IL-5 receptor subunit alpha; Il5r; CD125; CDw125;

Gene ID [16192](#)

mRNA Refseq [NM_008370](#)

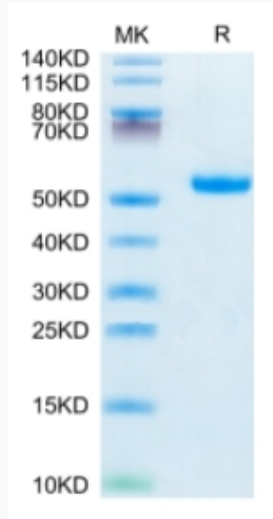
Protein Refseq [NP_032396](#)

 Tel: 1-631-559-9269 1-516-512-3133

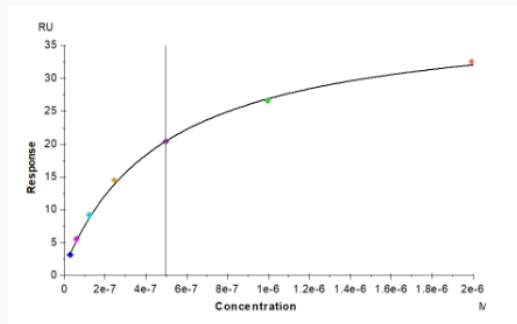
 Email: info@creative-biomart.com  Fax: 1-631-938-8127

 45-1 Ramsey Road, Shirley, NY 11967, USA

Tris-Bis PAGE



SPR Data



Tel: 1-631-559-9269 1-516-512-3133

Email: info@creative-biomart.com Fax: 1-631-938-8127

45-1 Ramsey Road, Shirley, NY 11967, USA