

Recombinant Mouse interleukin 6 Protein, Tag Free

Cat. No. IL6-183M Lot. No. (See product label)

SPECIFICATION

Product Overview Recombinant mouse IL-6 protein (P08505) (Phe 25-Thr 211) without tag was expressed in HEK293.

Species Mouse

Source HEK293

Protein Length 25-211aa

Description Cytokine with a wide variety of biological functions in immunity, tissue regeneration, and metabolism (Probable). Binds to IL6R, then the complex associates to the signaling subunit IL6ST/gp130 to trigger the intracellular IL6-signaling pathway. The interaction with the membrane-bound IL6R and IL6ST stimulates 'classic signaling', whereas the binding of IL6 and soluble IL6R to IL6ST stimulates 'trans-signaling'. Alternatively, 'cluster signaling' occurs when membrane-bound IL6:IL6R complexes on transmitter cells activate IL6ST receptors on neighboring receiver cells. IL6 is a potent inducer of the acute phase response. Rapid production of IL6 contributes to host defense during infection and tissue injury, but excessive IL6 synthesis is involved in disease pathology. In the innate immune response, is synthesized by myeloid cells, such as macrophages and dendritic cells, upon recognition of pathogens through toll-like receptors (TLRs) at the site of infection or tissue injury. In the adaptive immune response, is required for the differentiation of B-cells into immunoglobulin-secreting cells (Probable). Plays a major role in the differentiation of CD4+ T cell subsets. Essential factor for the development of T follicular helper (Tfh) cells that are required for the

 Tel: 1-631-559-9269 1-516-512-3133

 Email: info@creative-biomart.com  Fax: 1-631-938-8127

 45-1 Ramsey Road, Shirley, NY 11967, USA

induction of germinal-center formation. Together with IL21, controls the early generation of Tfh cells and are critical for an effective antibody response to acute viral infection.

Tag Non

Molecular Mass 22.1 kDa

Endotoxin Less than 1.0 EU/μg by the LAL method.

Purity >95% as determined by SDS-PAGE.

Storage Please avoid repeated freeze-thaw cycles. Samples are stable for up to twelve months from date of receipt at -20 to -80 centigrade. It is recommended that aliquot the reconstituted solution to minimize freeze-thaw cycles.

Storage Buffer Lyophilized from a 0.2 μm filtered solution of PBS, pH7.4, 5% Trehalose, 5% mannitol.

Reconstitution Reconstitute at 250 μg/mL in sterile water.

GENE INFORMATION

Gene Name IL6 interleukin 6 [*Mus musculus* (house mouse)]

Official Symbol IL6

Synonyms IL6; interleukin 6; interleukin-6; interleukin HP-1; B-cell hybridoma growth factor; Il-6;

Gene ID 16193

 Tel: 1-631-559-9269 1-516-512-3133

 Email: info@creative-biomart.com  Fax: 1-631-938-8127

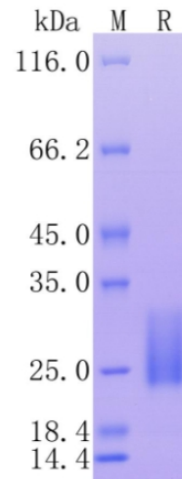
 45-1 Ramsey Road, Shirley, NY 11967, USA

mRNA Refseq [NM_031168](#)

Protein Refseq [NP_112445](#)

UniProt ID [P08505](#)

Protein on SDS-PAGE under reducing (R) condition.



 Tel: 1-631-559-9269 1-516-512-3133

 Email: info@creative-biomart.com  Fax: 1-631-938-8127

 45-1 Ramsey Road, Shirley, NY 11967, USA