

Active Recombinant Mouse Il6 protein, His-tagged

Cat. No. Il6-7246M Lot. No. (See product label)

SPECIFICATION

Product Overview	Active Recombinant Mouse Il6 protein(P08505)(25~211 aa), fused with N-terminal His tag, was expressed in HEK293.
Species	Mouse
Source	HEK293
ProteinLength	25-211 aa
Form	Lyophilized from sterile 20mM Tris, 150mM NaCl, pH8.0, containing 1mM EDTA, 1mM DTT, 0.01% SKL, 5% Trehalose and Proclin300.
Bio-activity	Interleukin-6 (IL-6), a pro-inflammatory cytokine and an anti-inflammatory myokine, plays important roles in the acute phase reaction, inflammation, hematopoiesis, bone metabolism, and cancer progression. It has been reported that IL6 induces C-reactive protein (CRP) expression through the STAT3 pathway in HepG2 cells. To test this effect, HepG2 cells were seeded overnight at a density of 1×10^5 cells/mL, and treated with or without various concentrations of IL6 for 24h and CRP levels in the cell supernatant were determined by ELISA.
Molecular Mass	23.3kDa
Endotoxin	<1.0EU per 1 μ g (determined by the LAL method).
Purity	> 95% as determined by SDS-PAGE.

 Tel: 1-631-559-9269 1-516-512-3133

 Email: info@creative-biomart.com  Fax: 1-631-938-8127

 45-1 Ramsey Road, Shirley, NY 11967, USA

Storage Avoid repeated freeze/thaw cycles. Store at -20°C for 12 months. Aliquot and store at -80°C for 12 months.

Reconstitution Reconstitute in 20mM Tris, 150mM NaCl (PH8.0) to a concentration of 0.1-1.0 mg/mL. Do not vortex.

GENE INFORMATION

Gene Name IL6 interleukin 6 [*Mus musculus*]

Official Symbol IL6

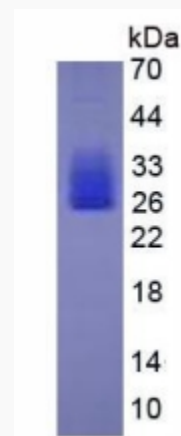
Synonyms IL6; interleukin 6; interleukin-6; interleukin HP-1; B-cell hybridoma growth factor; IL-6;

Gene ID 16193

mRNA Refseq NM_031168

Protein Refseq NP_112445

SDS-PAGE

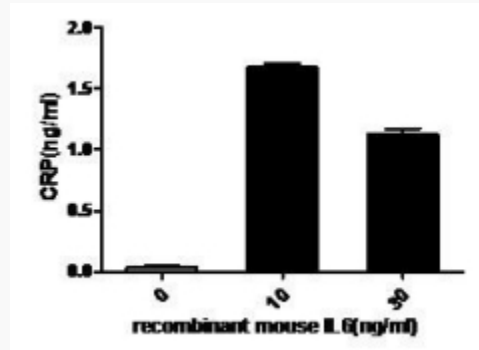


 Tel: 1-631-559-9269 1-516-512-3133

 Email: info@creative-biomart.com  Fax: 1-631-938-8127

 45-1 Ramsey Road, Shirley, NY 11967, USA

Activity



 Tel: 1-631-559-9269 1-516-512-3133

 Email: info@creative-biomart.com  Fax: 1-631-938-8127

 45-1 Ramsey Road, Shirley, NY 11967, USA