

Recombinant Rat Il6r protein, His-tagged

Cat. No. Il6r-1836R **Lot. No.** (See product label)

SPECIFICATION

Product Overview	Recombinant Rat Il6r aa. (Ala19~Ala348 (Accession # P25391)) fused with N-terminal His tag was produced in E. coli cells.
Species	Rat
Source	E.coli
ProteinLength	Ala19~Ala348
Description	Alpha subunit of the interleukin 6 receptor complex.
Form	Freeze-dried powder
Molecular Mass	Predicted Molecular Mass: 38.0kDa.
Endotoxin	<1.0EU per 1ug (determined by the LAL method)
Purity	>95%
Characteristic	The isoelectric point is 6.1.
Applications	SDS-PAGE; WB; ELISA; IP.
Stability	The thermal stability is described by the loss rate of the target protein. The loss rate was determined by accelerated thermal degradation test, that is, incubate the protein

 Tel: 1-631-559-9269 1-516-512-3133

 Email: info@creative-biomart.com  Fax: 1-631-938-8127

 45-1 Ramsey Road, Shirley, NY 11967, USA

at 37°C for 48h, and no obvious degradation and precipitation were observed. (Referring from China Biological Products Standard, which was calculated by the Arrhenius equation.) The loss of this protein is less than 5% within the expiration date under appropriate storage condition.

Storage

Avoid repeated freeze/thaw cycles. Store at 2-8°C for one month. Aliquot and store at -80°C for 12 months.

Storage Buffer

Supplied as lyophilized form in PBS, pH7.4, containing 5% trehalose, 0.01% sarcosyl.

Reconstitution

Reconstitute in sterile PBS, pH7.2-pH7.4.

GENE INFORMATION

Gene Name

Il6r interleukin 6 receptor [*Rattus norvegicus* (Norway rat)]

Official Symbol

Il6r

Synonyms

CGB3; chorionic gonadotropin beta subunit 3; CGB; CGB5; CGB7; CGB8; hCGB; choriogonadotropin subunit beta 3; CG-beta; chorionic gonadotrophin chain beta; chorionic gonadotropin beta 3 subunit; chorionic gonadotropin beta chain; chorionic gonadotropin chain beta; chorionic gonadotropin, beta polypeptide

Gene ID

24499

mRNA Refseq

NM_017020.3

Protein Refseq

NP_058716.2

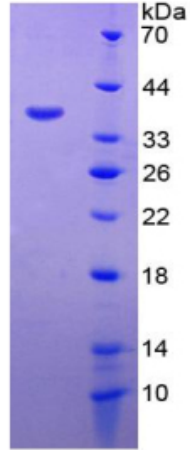
UniProt ID

P25391

 Tel: 1-631-559-9269 1-516-512-3133

 Email: info@creative-biomart.com  Fax: 1-631-938-8127

 45-1 Ramsey Road, Shirley, NY 11967, USA



15% SDS-PAGE

SDS-PAGE

 Tel: 1-631-559-9269 1-516-512-3133

 Email: info@creative-biomart.com  Fax: 1-631-938-8127

 45-1 Ramsey Road, Shirley, NY 11967, USA