

Recombinant Mouse Il6ra protein, His-tagged

Cat. No. Il6ra-583M Lot. No. (See product label)

SPECIFICATION

Product Overview	Recombinant Mouse Il6ra (Q3URV7) aa. (Ala52~Ala204) fused with His tag was produced in E. coli cells.
Species	Mouse
Source	E.coli
ProteinLength	Ala52~Ala204
Form	Freeze-dried powder
Molecular Mass	Predicted Molecular Mass: 18kDa; Accurate Molecular Mass: 18kDa as determined by SDS-PAGE reducing conditions.
Purity	>98%
Characteristic	Isoelectric point is 6.5.
Applications	Cell culture; Activity Assays.
Stability	The thermal stability is described by the loss rate. The loss rate was determined by accelerated thermal degradation test, that is, incubate the protein at 37°C for 48h, and no obvious degradation and precipitation were observed. The loss rate is less than 5% within the expiration date under appropriate storage condition.

 Tel: 1-631-559-9269 1-516-512-3133

 Email: info@creative-biomart.com  Fax: 1-631-938-8127

 45-1 Ramsey Road, Shirley, NY 11967, USA

Storage	Avoid repeated freeze/thaw cycles. Store at 2-8°C for one month. Aliquot and store at -80°C for 12 months.
Storage buffer	20mM Tris, 150mM NaCl, pH8.0, containing 0.05% sarcosyl and 5% trehalose.
Reconstitution	Reconstitute in 20mM Tris, 150mM NaCl (pH8.0) to a concentration of 0.1-1.0 mg/mL. Do not vortex

GENE INFORMATION

Gene Name	Il6ra interleukin 6 receptor, alpha [Mus musculus (house mouse)]
Official Symbol	Il6ra
Synonyms	Il6ra; interleukin 6 receptor, alpha; Il6r; CD126; IL-6R; IL-6RA; IL-6R-alpha; interleukin-6 receptor subunit alpha; IL-6 receptor alpha chain; IL-6 receptor subunit alpha; IL-6R 1; IL-6R subunit alpha
Gene ID	16194
mRNA Refseq	NM_001310676.1
Protein Refseq	NP_001297605.1
UniProt ID	Q3URV7

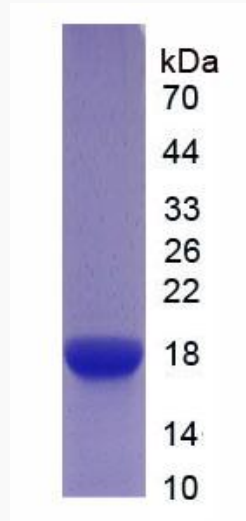
 Tel: 1-631-559-9269 1-516-512-3133

 Email: info@creative-biomart.com  Fax: 1-631-938-8127

 45-1 Ramsey Road, Shirley, NY 11967, USA



SDS-PAGE



Tel: 1-631-559-9269 1-516-512-3133

Email: info@creative-biomart.com Fax: 1-631-938-8127

45-1 Ramsey Road, Shirley, NY 11967, USA