

Recombinant Rat Immt Transmembrane protein, His-tagged

Cat. No. Immt-2438R Lot. No. (See product label)

SPECIFICATION

Product Overview	Recombinant Rat Immt protein(Q3KR86)(34-609aa), fused to N-terminal His tag, was expressed in E. coli.
Species	Rat
Source	E.coli
ProteinLength	34-609aa
Form	If the delivery form is liquid, the default storage buffer is Tris/PBS-based buffer, 5%-50% glycerol. If the delivery form is lyophilized powder, the buffer before lyophilization is Tris/PBS-based buffer, 6% Trehalose, pH 8.0.
Molecular Mass	66.3 kDa
AA Sequence	STSSSSGVTAGKIAGAGLLFVGGGIGGTILYAKWDSHFRESVEKTIPYSDKLFGMVL GSAPYTVPLPKKPIQSGPLKISSVSEVMTDSELPMAQTQETNGDTPASAAGDPAPEV EHEDTINTECPNTDEGTSTFVTAALAKSLEDALNQTATVTRQTITAQNAAVQAVKAH SSTLKTAMDNSEIAGEKKSQAQWRTVEGALKERRKAVDEAADALLKAKEELEKMKTI EDAKKREIAGATPYITAAEKLHSMIVDLDSVVKVQAAQSEAKVVSQYHELVVQAR DDFRKELDSITPDITPGWKGMSISDLAGTLSTDDLNALIAHAHRRIDQLNRELAQQKA TEKQHIELALERQKLEEKRAFDSAVAKALEHHRSEIQAEQDRKVEEVRDAMENEMR TQLRRQAAAHTDHLRDVLKVQEQLKFEFEQDLSEKLSEQELEFHRRSQEQMDNFT LDINTAYARLRGIEQAVQSHAVAEERKARKAHLWLSVEALKYSMKTSSAEMPTIPLG

 Tel: 1-631-559-9269 1-516-512-3133

 Email: info@creative-biomart.com  Fax: 1-631-938-8127

 45-1 Ramsey Road, Shirley, NY 11967, USA

SAVEAIRVSCSDNEFTQALTAaipPESLTrGVYSEETLRARFYAVQKLAGRVAMIDET
KNSLYQ

Purity Greater than 85% as determined by SDS-PAGE.

Storage Store at -20°C/-80°C upon receipt, aliquoting is necessary for mutiple use. Avoid repeated freeze-thaw cycles.

Reconstitution Please reconstitute protein in deionized sterile water to a concentration of 0.1-1.0 mg/mL. We recommend to add 5-50% of glycerol (final concentration) and aliquot for long-term storage at -20°C/-80°C. Our default final concentration of glycerol is 50%.

GENE INFORMATION

Gene Name [Immt inner membrane protein, mitochondrial \[Rattus norvegicus \]](#)

Official Symbol [Immt](#)

Synonyms IMMT; inner membrane protein, mitochondrial; mitochondrial inner membrane protein; mitofilin; MGC125092;

Gene ID [312444](#)

mRNA Refseq [NM_001034928](#)

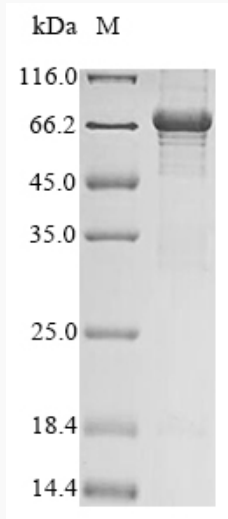
Protein Refseq [NP_001030100](#)

 Tel: 1-631-559-9269 1-516-512-3133

 Email: info@creative-biomart.com  Fax: 1-631-938-8127

 45-1 Ramsey Road, Shirley, NY 11967, USA

SDS-PAGE



 Tel: 1-631-559-9269 1-516-512-3133

 Email: info@creative-biomart.com  Fax: 1-631-938-8127

 45-1 Ramsey Road, Shirley, NY 11967, USA