

Recombinant Mouse Inhbe protein, His & GST-tagged

Cat. No. Inhbe-798M Lot. No. (See product label)

SPECIFICATION

Product Overview	Recombinant Mouse Inhbe aa. (Ser102~Val344 (Accession # O08717)) fused with N-terminal His & GST tag was produced in E. coli cells.
Species	Mouse
Source	E.coli
ProteinLength	Ser102~Val344
Description	This gene encodes a member of the TGF-beta (transforming growth factor-beta) superfamily of proteins. The encoded preproprotein is proteolytically processed to generate an inhibin beta subunit. Inhibins have been implicated in regulating numerous cellular processes including cell proliferation, apoptosis, immune response and hormone secretion. This gene may be upregulated under conditions of endoplasmic reticulum stress, and this protein may inhibit cellular proliferation and growth in pancreas and liver.
Form	Freeze-dried powder
Molecular Mass	Predicted Molecular Mass: 59.6kDa
Endotoxin	<1.0EU per 1g (determined by the LAL method)
Purity	> 95%

 Tel: 1-631-559-9269 1-516-512-3133

 Email: info@creative-biomart.com  Fax: 1-631-938-8127

 45-1 Ramsey Road, Shirley, NY 11967, USA

Characteristic	The isoelectric point is 8.1.
Applications	SDS-PAGE; WB; ELISA; IP
Stability	The thermal stability is described by the loss rate. The loss rate was determined by accelerated thermal degradation test, that is, incubate the protein at 37°C for 48h, and no obvious degradation and precipitation were observed. The loss rate is less than 5% within the expiration date under appropriate storage condition.
Storage	Avoid repeated freeze/thaw cycles. Store at 2-8°C for one month. Aliquot and store at -80°C for 12 months.
Storage buffer	Supplied as lyophilized form in PBS, pH7.4, containing 5% trehalose, 0.01% sarcosyl
Reconstitution	Reconstitute in sterile PBS, pH7.2-pH7.4

GENE INFORMATION

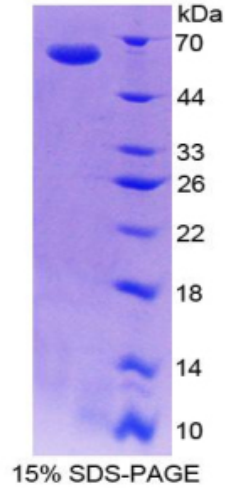
Gene Name	Inhbe inhibin beta-E [<i>Mus musculus</i> (house mouse)]
Official Symbol	Inhbe
Synonyms	Inhbe; inhibin beta-E; inhibin beta E chain; activin beta-E chain
Gene ID	16326
mRNA Refseq	NM_008382.3
Protein Refseq	NP_032408.2
UniProt ID	O08717

 Tel: 1-631-559-9269 1-516-512-3133

 Email: info@creative-biomart.com  Fax: 1-631-938-8127

 45-1 Ramsey Road, Shirley, NY 11967, USA

SDS-PAGE



 Tel: 1-631-559-9269 1-516-512-3133

 Email: info@creative-biomart.com  Fax: 1-631-938-8127

 45-1 Ramsey Road, Shirley, NY 11967, USA