

## Recombinant Rat Inhbe protein, His-tagged

**Cat. No.** Inhbe-799R    **Lot. No.** (See product label)

### SPECIFICATION

<b>Product Overview</b>	Recombinant Rat Inhbe aa. (Thr237~Ser350 (Accession # O88959)) fused with N-terminal His tag was produced in E. coli cells.
<b>Species</b>	Rat
<b>Source</b>	E.coli
<b>ProteinLength</b>	Thr237~Ser350
<b>Description</b>	Cytokine; involved in cell fate determination.
<b>Form</b>	Freeze-dried powder
<b>Molecular Mass</b>	Predicted Molecular Mass: 14.0kDa
<b>Endotoxin</b>	<1.0EU per 1g (determined by the LAL method)
<b>Purity</b>	> 95%
<b>Characteristic</b>	The isoelectric point is 6.
<b>Applications</b>	SDS-PAGE; WB; ELISA; IP
<b>Stability</b>	The thermal stability is described by the loss rate. The loss rate was determined by accelerated thermal degradation test, that is, incubate the protein at 37°C for 48h,

 Tel: 1-631-559-9269    1-516-512-3133

 Email: [info@creative-biomart.com](mailto:info@creative-biomart.com)     Fax: 1-631-938-8127

 45-1 Ramsey Road, Shirley, NY 11967, USA

and no obvious degradation and precipitation were observed. The loss rate is less than 5% within the expiration date under appropriate storage condition.

**Storage**

Avoid repeated freeze/thaw cycles. Store at 2-8°C for one month. Aliquot and store at -80°C for 12 months.

**Storage buffer**

Supplied as lyophilized form in PBS, pH7.4, containing 5% trehalose, 0.01% sarcosyl

**Reconstitution**

Reconstitute in sterile PBS, pH7.2-pH7.4

**GENE INFORMATION****Gene Name**

Inhbe inhibin beta E subunit [ *Rattus norvegicus* (Norway rat) ]

**Official Symbol**

Inhbe

**Synonyms**

Inhbe; inhibin beta E subunit; inhibin beta E chain; activin beta E; activin beta-E chain

**Gene ID**

83711

**mRNA Refseq**

NM\_031815.2

**Protein Refseq**

NP\_114003.2

**UniProt ID**

O88959

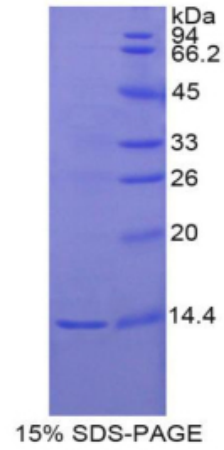
 Tel: 1-631-559-9269 1-516-512-3133

 Email: [info@creative-biomart.com](mailto:info@creative-biomart.com)  Fax: 1-631-938-8127

 45-1 Ramsey Road, Shirley, NY 11967, USA



SDS-PAGE



Tel: 1-631-559-9269 1-516-512-3133

Email: [info@creative-biomart.com](mailto:info@creative-biomart.com) Fax: 1-631-938-8127

45-1 Ramsey Road, Shirley, NY 11967, USA